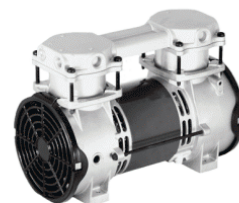
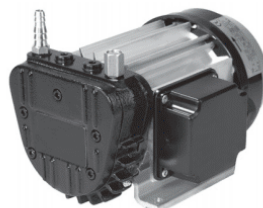




COMPRESSORS, VACUUM & LIQUID PUMPS

Global Solutions



Pump and Compressor Solutions for **OEMs** Worldwide

As the leader in providing fluidic solutions to Original Equipment Manufacturers, Thomas continues to develop new products to meet the requirements of evolving markets and applications. Breadth of product, proprietary technologies and global manufacturing benefit our customers.

These distinctions coupled with innovative research and development programs, qualify Thomas as the premier resource utilized by OEMs throughout the world.

Performance Range

The extensive product line presented in this catalog offers custom solutions configured to meet specific requirements.

- Flow** - The flow range extends to 22.1 cfm (625 l/min).
- Pressure** - The pressure range extends to 175 psi (12 bar).
- Vacuum** - The vacuum range extends to 99% of local barometer (10 mbar abs).
- Liquid** - Thomas pumps cover a flow range to 3 l/min and pressures to 60 m H₂O. These pumps are self-priming and can also be used for dosing applications.



Technology
Selection

Page 4

Series
Selection

Page 5-9

Model
Selection

Page 10-30

| | |
|--------------------|----|
| WOB-L® Piston | 10 |
| Articulated Piston | 16 |
| Diaphragm | 18 |
| Rotary Vane | 22 |
| Linear Diaphragm | 26 |
| Liquid Diaphragm | 30 |
| Liquid Linear | 30 |
| Liquid Peristaltic | 30 |

Technology Selection

Operating Principles for Compressors & Vacuum Pumps



WOB-L* PISTON

Oil-less WOB-L* piston pumps and compressors. Best choice for pressure and/or vacuum applications that require compact, lightweight designs and high performance piston seals.

Free flow: to 7.1 cfm (200 l/min)

Pressure: to 160 psi (11 bar)

Vacuum: to 99% local barometer



ROTARY VANE

Oil-less and self-lubricating rotary vane pumps and compressors. Low vibration, nearly pulsation free, compact and in some cases reversible flow operation.

Free flow: to 10 cfm (283 lpm)

Pressure: to 14.5 psi (1 bar)

Vacuum: to 93% local barometer



ARTICULATED PISTON

Oil-less articulating piston pumps and compressors. Well suited for applications that require high pressures with proportionately higher flow capability.

Free flow: to 5.4 cfm (153 l/min)

Pressure: to 175 psi (12.1 bar)



LINEAR

Oil-less linear diaphragm pumps and compressors. Quiet operation, lower pulsation, higher efficiency and fewer wearing parts.

Free flow: to 22.1 cfm (625 l/min)

Pressure: to 10.2 psi (700 mbar)

Vacuum: to 55% local barometer



DIAPHRAGM

Oil-less diaphragm pumps and compressors. Durable diaphragm design provides high efficiency, low sound level and good air tightness. Adapts well to different gases.

Free flow: to 3.2 cfm (91 l/min)

Pressure: to 44 psi (3 bar)

Vacuum: to 99% local barometer

Operating Principles for Liquid Pumps



DIAPHRAGM

Liquid diaphragm pumps. Self-priming, dry running and suitable for continuous operation. Drive available for all required AC and DC voltages.

Free flow max: 1100 ml/min

Suction height: 6 m H₂O

Pressure height: 60 m H₂O



PERISTALTIC

Liquid peristaltic pumps. Low vibration, nearly pulsation free and of compact design. Reversible operation. Adjustable through supply voltage.

Free flow max: 3000 ml/min

Suction height: 8.0 m H₂O

Pressure height: 10 m H₂O



LINEAR

Liquid linear diaphragm pumps. Very long life and low sound level. For applications with low pressure requirements.

Free flow max: 300 ml/min

Suction height: 3.0 m H₂O

Pressure height: 9.0 m H₂O

Series Selection

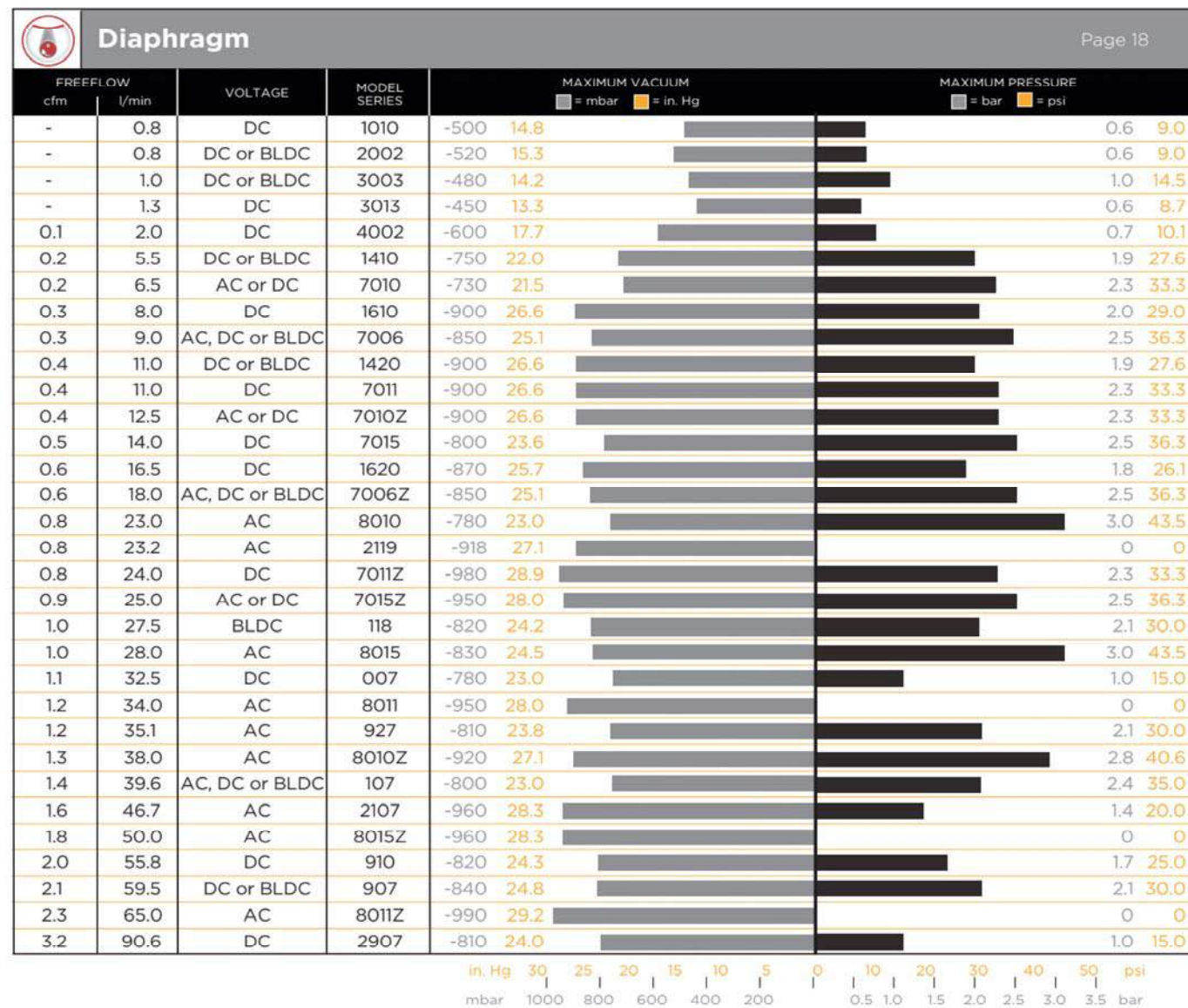
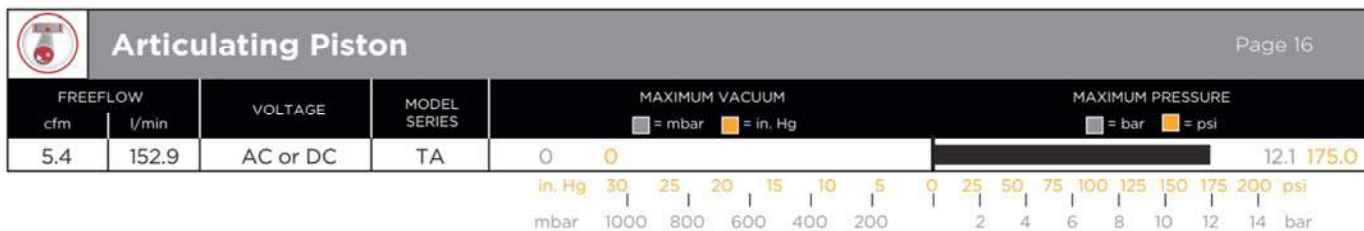
| FREEFLOW | | VOLTAGE | MODEL SERIES | MAXIMUM VACUUM | | MAXIMUM PRESSURE | |
|----------|-------|---------------|--------------|----------------|----------|------------------|-------|
| cfm | l/min | | | = mbar | = in. Hg | = bar | = psi |
| 0.19 | 5.4 | DC or BLDC | 8003 | -800 | 23.6 | 2.0 | 29.0 |
| 0.25 | 7.2 | AC or DC | 8005 | -780 | 23.0 | 2.5 | 36.0 |
| 0.46 | 13.0 | AC or DC | 014 | -880 | 26.0 | 6.9 | 100.0 |
| 0.476 | 13.5 | BLDC | 2110Z | 0 | 0 | 2.1 | 30.0 |
| 0.48 | 13.6 | DC | 115 | 0 | 0 | 8.3 | 120.0 |
| 0.49 | 14.0 | AC or DC | 8009 | 0 | 0 | 7.0 | 102.0 |
| 0.50 | 14.2 | BLDC | 230Z | 0 | 0 | 2.1 | 30.0 |
| 0.54 | 15.3 | DC | 135 | 0 | 0 | 6.0 | 87.0 |
| 0.56 | 15.8 | AC or DC | 8006 | -800 | 23.6 | 3.0 | 44.0 |
| 0.85 | 24.0 | DC | 309 | -900 | 26.6 | 11.0 | 160.0 |
| 0.86 | 24.5 | DC | 8009Z | 0 | 0 | 6.9 | 100.0 |
| 0.92 | 26.1 | AC DC or BLDC | 405/415 | -910 | 27.0 | 6.9 | 100.0 |
| 0.97 | 27.5 | DC | 215 | 0 | 0 | 8.3 | 120.0 |
| 1.0 | 28.3 | BLDC | 250Z | -820 | 24.2 | 2.1 | 30.0 |
| 1.1 | 31.0 | AC or DC | 8006Z | -950 | 28.0 | 3.0 | 44.0 |
| 1.1 | 32.3 | BLDC | 2220Z | 0 | 0 | 2.1 | 30.0 |
| 1.2 | 34.0 | BLDC | 2250Z | -870 | 25.9 | 2.1 | 30.0 |
| 1.2 | 34.0 | AC | 380 | -890 | 26.2 | 6.9 | 100.0 |
| 1.2 | 34.5 | AC | 617 | -910 | 26.8 | 6.9 | 100.0 |
| 1.3 | 36.0 | DC | 319 | -940 | 27.8 | 8.3 | 120.0 |
| 1.6 | 45.3 | AC | 668 | -920 | 27.2 | 7.0 | 100.0 |
| 1.8 | 50.1 | BLDC | 260Z | -860 | 25.5 | 2.1 | 30.0 |
| 2.4 | 68.0 | AC | 660 | -910 | 27.0 | 3.4 | 50.0 |
| 2.9 | 82.1 | AC or BLDC | 2450 | 0 | 0 | 2.1 | 30.0 |
| 3.0 | 85.0 | AC | 2380B | -910 | 26.9 | 0.0 | 0.0 |
| 3.1 | 89.2 | AC | 2668/2688 | -980 | 29.0 | 11.1 | 160.0 |
| 3.2 | 90.6 | AC | 2380 | -920 | 27.5 | 6.9 | 100.0 |
| 3.4 | 96.3 | AC | 2505 | -885 | 26.1 | 6.9 | 100.0 |
| 3.8 | 107.6 | AC | 2665/2685 | 0 | 0 | 8.3 | 120.0 |
| 3.8 | 107.6 | AC | 1207 | -880 | 25.9 | 8.6 | 125.0 |
| 4.6 | 130.3 | AC | 2660 | -980 | 29.0 | 3.1 | 45.0 |
| 5.5 | 155.7 | AC | 2775 | -900 | 26.6 | 6.9 | 100.0 |
| 6.6 | 186.9 | AC | 2807 | -850 | 25.0 | 8.3 | 120.0 |
| 7.5 | 212.4 | AC | 2755 | -980 | 29.0 | 12.1 | 175.0 |



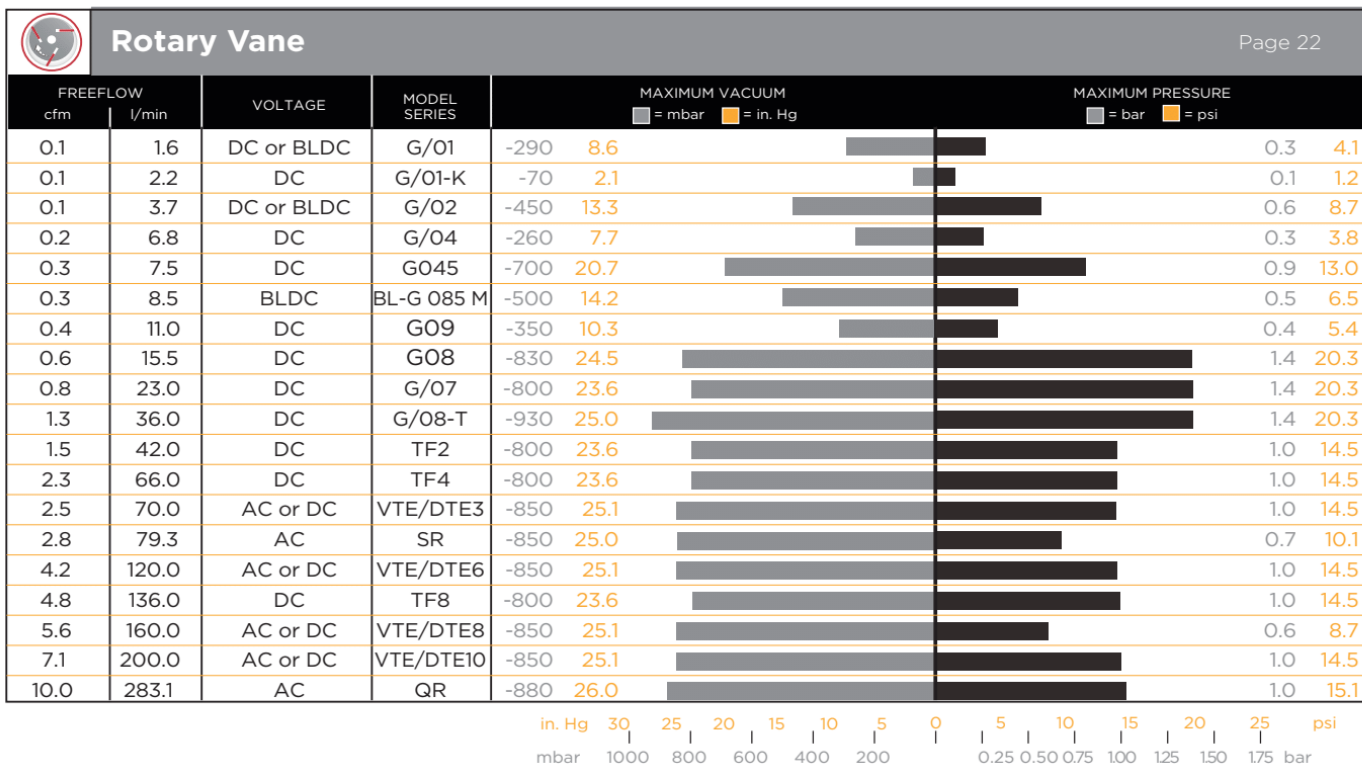
| FREEFLOW | | VOLTAGE | MODEL SERIES | MAXIMUM VACUUM | | MAXIMUM PRESSURE | |
|----------|-------|--------------|--------------|----------------|----------|------------------|-------|
| cfm | l/min | | | = mbar | = in. Hg | = bar | = psi |
| 0.41 | 11.6 | Rectified DC | 500 | -910 | 27.0 | 30.0 | 435.0 |
| 0.67 | 19.0 | AC | 520 | -780 | 23.0 | 30.0 | 435.0 |
| 1.2 | 33.0 | AC | 2520 | -860 | 25.3 | 30.0 | 435.0 |



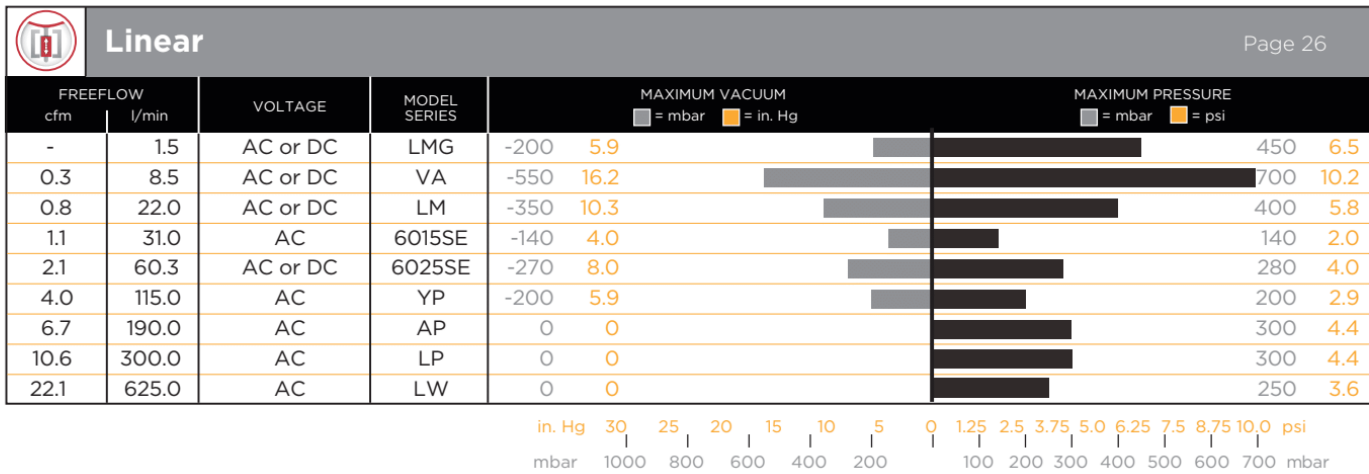
Series Selection



Series Selection

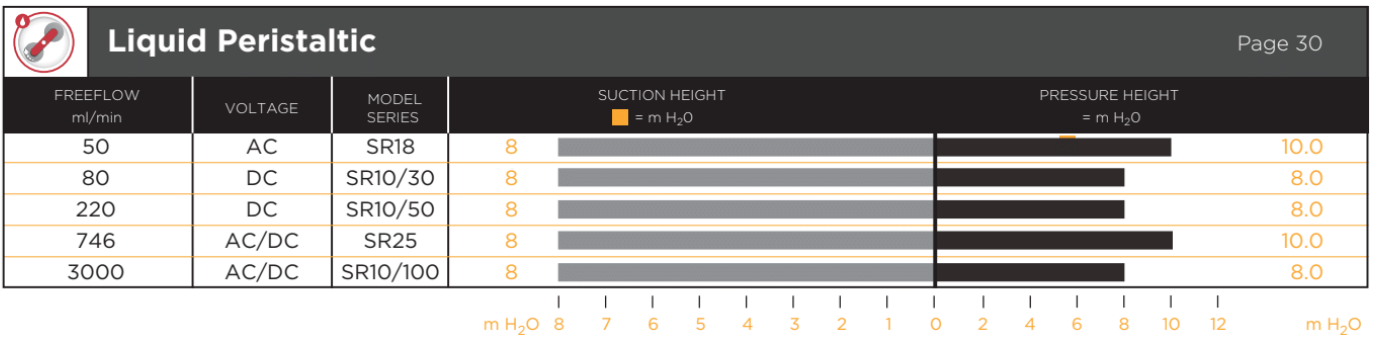
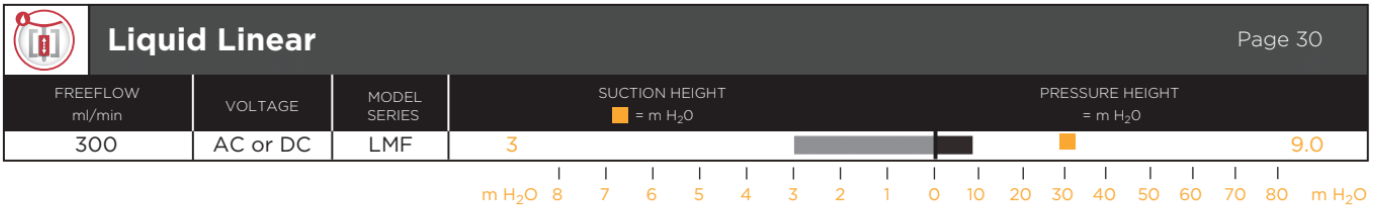
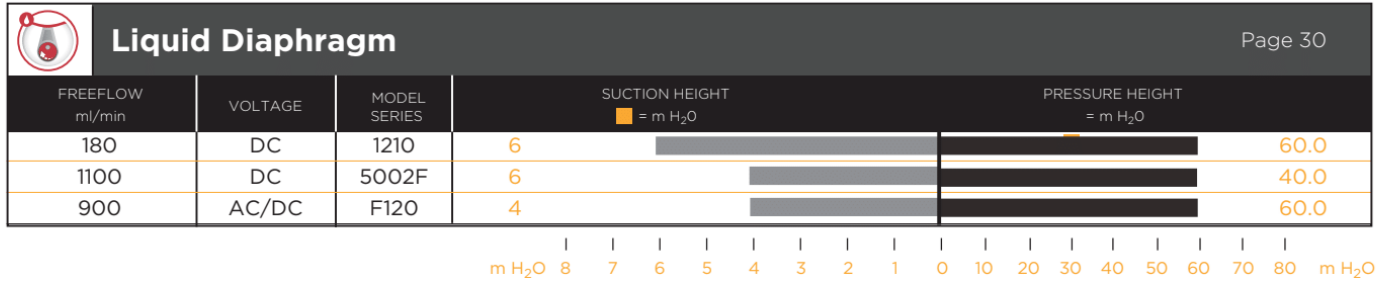


Series Selection



Series Selection

THOMAS
by Gardner Denver



Model Selection

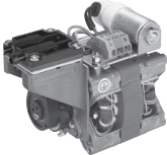


WOB-L® Piston

8003 BLDC



8006 AC



8009 DC



115ADC



135SDC



215DC



230Z



3D19



| Pressure | | | | | | | | | | | | |
|----------|----------------|-------|---------------------|------|------|------|------|------|------|-----|-------------------------|--------------|
| MODEL | MOTOR CAPACITY | | FLOW l/min @ bar | | | | | | | | MAXIMUM PRESSURE bar | |
| | VOLTAGE | TYPE* | 0.0 | 0.5 | 1.0 | 1.5 | 2.0 | 3.0 | 5.0 | 7.0 | CONTINUOUS | INTERMITTENT |
| 8003D | 12,24 | PM | 4.3 | 3.1 | 2.1 | 1.3 | - | - | - | - | 1.0 | 2.0 |
| 8003ZDP | 12 | PM | 5.4 | 2.8 | 1.6 | 0.8 | - | - | - | - | 0.3 | 2.0 |
| 8003V | 12,24 | PM | - | - | - | - | - | - | - | - | - | - |
| 8003ZVR | 12 | PM | - | - | - | - | - | - | - | - | - | - |
| 8005D | 12,24 | PM | 7.2 | 5.7 | 4.3 | 3.2 | 2.4 | - | - | - | 1.5 | 2.5 |
| 8005D | 230/50/1 | SP | 6.0 | 4.8 | 3.7 | 2.8 | 2.0 | - | - | - | 1.5 | 2.5 |
| 8005V | 12,24 | PM | - | - | - | - | - | - | - | - | - | - |
| 8005V | 230/50/1 | SP | - | - | - | - | - | - | - | - | - | - |
| 8006D | 12,24 | PM | 15.8 | 12.2 | 9.3 | 6.9 | 4.8 | 1.3 | - | - | 1.0 | 3.0 |
| 8006D | 230/50/1 | PSC | 15.8 | 12.6 | 10.1 | 7.6 | 5.5 | 2.0 | - | - | 1.0 | 3.0 |
| 8006V | 12,24 | PM | - | - | - | - | - | - | - | - | - | - |
| 8006V | 230/50/1 | SP | - | - | - | - | - | - | - | - | - | - |
| 8006ZVP | 12,24 | PM | - | - | - | - | - | - | - | - | - | - |
| 8006ZVP | 230/50/1 | PSC | - | - | - | - | - | - | - | - | - | - |
| 8006ZVR | 230/50/1 | PSC | - | - | - | - | - | - | - | - | - | - |
| 8009D | 12,24 | PM | 14.0 | 11.5 | 9.0 | 8.0 | 7.1 | 5.6 | 3.2 | 1.8 | 1.0 | 7.0 |
| 8009D | 230/50/1 | PSC | 11.8 | 10.4 | 9.4 | 8.5 | 7.6 | 6.2 | 4.2 | 2.9 | 1.0 | 7.0 |
| 8009ZD | 24 | PM | 24.5 | 21.6 | 19.1 | 17.2 | 15.3 | 13.4 | 10.2 | 7.0 | 1.0 | 7.0 |
| 8009ZD | 230/50/1 | PSC | 22.4 | 19.9 | 17.8 | 16.1 | 14.4 | 11.9 | 8.2 | 5.4 | 1.0 | 7.0 |

*PM = Permanent Magnet, SP = Shaded Pole, PSC = Permanent Split Capacitor

Note: Minimum release quantities or regional availability may apply. Consult factory.



WOB-L® Piston

| Pressure | | | | | | | | | | | | |
|----------------|----------------|-------|-------------------|------|------|------|------|------|------|------|-------------------------|--------------|
| MODEL | MOTOR CAPACITY | | FLOW cfm @ psi | | | | | | | | MAXIMUM PRESSURE psi | |
| | VOLTAGE | TYPE* | 0 | 5 | 10 | 20 | 40 | 60 | 80 | 100 | CONTINUOUS | INTERMITTENT |
| 014CA28 | 115/60/1 | SP | 0.46 | 0.40 | 0.37 | 0.32 | 0.26 | 0.22 | 0.17 | 0.12 | 100.0 | 100.0 |
| 014CD28 | 220/50/1 | SP | 0.37 | 0.33 | 0.30 | 0.28 | 0.22 | 0.17 | 0.15 | 0.09 | 100.0 | 100.0 |
| 014CDC20/12 | 12 | PM | 0.39 | 0.31 | 0.22 | 0.16 | - | - | - | - | 20.0 | 50.0 |
| 115ADC56/ | 12 or 24 | PM | 0.48 | 0.44 | 0.39 | 0.36 | 0.29 | 0.25 | 0.21 | 0.16 | - | 120.0 |
| 135ADC56/ | 12 or 24 | PM | 0.54 | 0.51 | 0.48 | 0.42 | 0.38 | 0.27 | 0.22 | 0.17 | - | 87.0 |
| 135SDC56/ | 12 or 24 | PM | 0.54 | 0.51 | 0.48 | 0.42 | 0.38 | 0.27 | 0.22 | 0.17 | - | 87.0 |
| 215ADC38/ | 12 or 24 | PM | 0.97 | 0.92 | 0.87 | 0.76 | 0.61 | 0.46 | 0.38 | 0.30 | - | 120.0 |
| 230ZA30/12 | 12 | BLDC | 0.74 | 0.57 | 0.54 | 0.46 | - | - | - | - | 30.0 | 30.0 |
| 250ZC35/24 | 24 | BLDC | 1.00 | 0.90 | 0.86 | 0.79 | - | - | - | - | 30.0 | 30.0 |
| 260ZC35/24 | 24 | BLDC | 1.77 | 1.62 | 1.49 | 1.23 | - | - | - | - | 30.0 | 30.0 |
| 309CDC56/12 | 12 | PM | 0.85 | 0.82 | 0.73 | 0.70 | 0.60 | 0.53 | 0.45 | 0.42 | - | 160.0 |
| 309DDC56/12 | 12 | PM | 0.85 | 0.82 | 0.73 | 0.70 | 0.60 | 0.53 | 0.45 | 0.42 | - | 134.0 |
| 3191250IRBLSCE | 12 | PM | 1.25 | 1.20 | 1.15 | 1.05 | 0.90 | 0.79 | 0.71 | 0.65 | 100.0 | 100.0 |
| 380CE32 | 115/60/1 | PSC | 1.20 | 1.15 | 1.10 | 0.98 | 0.78 | 0.60 | 0.45 | 0.30 | 100.0 | 100.0 |
| 380CS32 | 100/50/60/1 | PSC | 1.20 | 1.15 | 1.10 | 0.98 | 0.78 | 0.60 | - | - | 60.0 | 60.0 |
| 3D191250IRLSCE | 12 | PM | 1.27 | 1.22 | 1.18 | 1.09 | 0.93 | 0.83 | 0.73 | 0.68 | 100.0 | 120.0 |
| 405AA38 | 115/60/1 | SP | 0.29 | 0.27 | 0.24 | 0.17 | - | - | - | - | 20.0 | 40.0 |
| 405AD38 | 220/50/1 | SP | 0.26 | 0.24 | 0.19 | 0.17 | 0.14 | - | - | - | 20.0 | 40.0 |
| 405ADC38/ | 12 or 24 | PM | 0.79 | 0.77 | 0.75 | 0.71 | 0.56 | 0.38 | 0.33 | 0.24 | 100.0 | 100.0 |
| 415CDC30/ | 12 or 24 | PM | 0.92 | 0.87 | 0.81 | 0.71 | 0.56 | 0.44 | 0.34 | 0.25 | 100.0 | 100.0 |
| 415ZC36/24 | 24 | BLDC | .64 | 0.59 | 0.55 | 0.51 | 0.42 | 0.38 | 0.34 | 0.31 | 100.0 | 100.0 |

*PM = Permanent Magnet, SP = Shaded Pole, PSC = Permanent Split Capacitor, BLDC=Brushless DC

Note: Minimum release quantities or regional availability may apply. Consult factory.

Note: 50/60 Hz voltage - flow values listed at 60 Hz.

Model Selection



WOB-L® Piston

| Vacuum | | | | | | | | | | | |
|---------|----------------|-------|----------------------|------|------|------|------|------|---------------------|---------------------------------|--------------|
| MODEL | MOTOR CAPACITY | | FLOW l/min @ mbar | | | | | | MAX. VACUUM mbar | DIMENSIONS (H x W x L) mm | WEIGHT kg |
| | VOLTAGE | TYPE* | 0 | -100 | -200 | -400 | -600 | -800 | | | |
| 8003D | 12, 24 | - | - | - | - | - | - | - | - | 54 x 30 x 82 | 0.19 |
| 8003ZDP | 12 | PM | - | - | - | - | - | - | - | 53 x 30 x 123 | 0.28 |
| 8003V | 12,24 | PM | 4.3 | 3.5 | 2.8 | 1.5 | 0.2 | - | -650 | 54 x 30 x 82 | 0.19 |
| 8003ZVR | 12 | PM | 2.9 | 2.5 | 2.0 | 1.2 | 0.6 | - | -800 | 53 x 30 x 123 | 0.28 |
| 8005D | 12,24 | PM | - | - | - | - | - | - | - | 75 x 96 x 118 | 1.1 |
| 8005D | 230/50/1 | SP | - | - | - | - | - | - | - | 75 x 106 x 110 | 1.1 |
| 8005V | 12,24 | PM | 7.2 | 6.0 | 4.8 | 3.0 | 1.4 | - | -780 | 75 x 96 x 118 | 1.1 |
| 8005V | 230/50/1 | SP | 6.0 | 4.9 | 3.8 | 2.4 | 1.2 | - | -780 | 75 x 106 x 110 | 1.1 |
| 8006D | 12,24 | PM | - | - | - | - | - | - | - | 100 x 71 x 146 | 1.2 |
| 8006D | 230/50/1 | PSC | - | - | - | - | - | - | - | 114 x 78 x 147 | 1.5 |
| 8006V | 12,24 | PM | 15.8 | 13.4 | 11.1 | 6.2 | 3.6 | - | -800 | 100 x 71 x 146 | 1.2 |
| 8006V | 230/50/1 | SP | 14.2 | 12.0 | 9.7 | 6.0 | 3.0 | - | -800 | 110 x 71 x 131 | 1.5 |
| 8006ZVP | 12,24 | PM | 31.0 | 25.0 | 20.0 | 11.7 | 5.1 | - | -800 | 99 x 63 x 191 | 0.9 |
| 8006ZVP | 230/50/1 | PSC | 29.0 | 24.9 | 20.7 | 12.9 | 6.2 | - | -800 | 114 x 78 x 193 | 2.0 |
| 8006ZVR | 230/50/1 | PSC | 14.2 | 12.0 | 10.5 | 7.0 | 4.0 | 1.5 | -950 | 114 x 78 x 193 | 2.0 |
| 8009D | 12,24 | PM | - | - | - | - | - | - | - | 104 x 63 x 145 | 1.1 |
| 8009D | 230/50/1 | PSC | - | - | - | - | - | - | - | 108 x 91 x 153 | 1.7 |
| 8009ZD | 24 | PM | - | - | - | - | - | - | - | 105 x 70 x 177 | 2.1 |
| 8009ZD | 230/50/1 | PSC | - | - | - | - | - | - | - | 108 x 110 x 195 | 2.5 |

*PM = Permanent Magnet, SP = Shaded Pole, PSC = Permanent Split Capacitor

Note: Minimum release quantities or regional availability may apply. Consult factory.



WOB-L® Piston

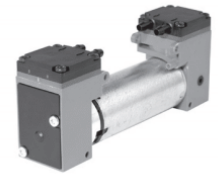
| Vacuum | | | | | | | | | | | |
|----------------|----------------|-------|----------------------|------|------|------|------|------|-----------------------|---------------------------------|--------------|
| MODEL | MOTOR CAPACITY | | FLOW cfm @ in. Hg | | | | | | MAX. VACUUM in. Hg | DIMENSIONS (H x W x L) in | WEIGHT lb |
| | VOLTAGE | TYPE* | 0 | 5 | 10 | 15 | 20 | 25 | | | |
| 014CA28 | 115/60/1 | SP | 0.46 | 0.37 | 0.28 | 0.19 | 0.09 | - | 26.0 | 5.02 x 4.50 x 5.89 | 4.7 |
| 014CD28 | 220/50/1 | SP | 0.37 | 0.30 | 0.24 | 0.17 | 0.07 | - | 25.7 | 5.06 x 4.50 x 5.89 | 4.7 |
| 014CDC20/12 | 12 | PM | 0.39 | 0.24 | 0.18 | 0.12 | 0.06 | - | 25.3 | 4.09 x 1.89 x 5.58 | 2.3 |
| 115ADC56/ | 12 or 24 | PM | - | - | - | - | - | - | - | 5.13 x 1.01 x 5.27 | 1.6 |
| 135ADC56/ | 12 or 24 | PM | - | - | - | - | - | - | - | 3.60 x 1.66 x 4.34 | 1.2 |
| 135SDC56/ | 12 or 24 | PM | - | - | - | - | - | - | - | 4.13 x 1.66 x 4.34 | 1.3 |
| 215ADC38/ | 12 or 24 | PM | - | - | - | - | - | - | - | 4.46 x 2.10 x 6.18 | 3.0 |
| 230ZA30/12 | 12 | BLDC | - | - | - | - | - | - | - | 3.80 x 2.64 x 3.63 | 1.2 |
| 250ZC35/24 | 24 | BLDC | 1.00 | 0.80 | 0.59 | 0.38 | 0.18 | - | 24.2 | 4.54 x 3.02 x 4.14 | 2.4 |
| 260ZC35/24 | 24 | BLDC | 1.77 | 1.30 | 0.94 | 0.60 | 0.26 | 0.03 | 25.5 | 4.63 x 3.02 x 4.12 | 2.8 |
| 309CDC56/12 | 12 | PM | 0.75 | 0.61 | 0.48 | 0.34 | 0.21 | 0.09 | 26.7 | 6.14 x 4.00 x 7.65 | 5.1 |
| 309DDC56/12 | 12 | PM | - | - | - | - | - | - | - | 6.79 x 5.26 x 9.08 | 6.4 |
| 3191250IRBLSCE | 12 | PM | 1.25 | 0.84 | 0.62 | 0.43 | 0.27 | 0.07 | 27.0 | 6.14 x 4.00 x 7.46 | 5.1 |
| 380CE32 | 115/60/1 | PSC | 1.20 | 0.97 | 0.75 | 0.52 | 0.29 | 0.06 | 26.2 | 6.73 x 5.14 x 6.99 | 9.7 |
| 380CS32 | 100/50/60/1 | PSC | 1.20 | 0.97 | 0.75 | 0.52 | 0.29 | 0.06 | 26.2 | 6.73 x 5.14 x 8.40 | 9.95 |
| 3D191250IRLSCE | 12 | PM | - | - | - | - | - | - | - | 6.82 x 5.26 x 9.12 | 6.4 |
| 405AA38 | 115/60/1 | SP | - | - | - | - | - | - | - | 5.30 x 4.25 x 6.74 | 5.5 |
| 405AD38 | 230/50/1 | SP | - | - | - | - | - | - | - | 5.30 x 4.25 x 6.74 | 5.5 |
| 405ADC38/ | 12 or 24 | PM | - | - | - | - | - | - | - | 5.30 x 4.26 x 7.29 | 4.3 |
| 415CDC30/ | 12 or 24 | PM | 0.92 | 0.75 | 0.54 | 0.34 | 0.20 | - | 24.6 | 5.35 x 4.25 x 7.29 | 5.0 |
| 415ZC36/24 | 24 | BLDC | 0.64 | 0.49 | 0.39 | 0.28 | 0.18 | 0.08 | 27.0 | 5.88 x 4.25 x 6.04 | 3.6 |

*PM = Permanent Magnet, SP = Shaded Pole, PSC = Permanent Split Capacitor, BLDC=Brushless DC

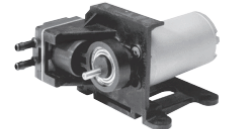
Note: Minimum release quantities or regional availability may apply. Consult factory.

Note: 50/60 Hz voltage - flow values listed at 60 Hz.

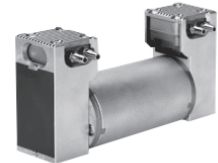
8003 Z



8005 DC



8009 ZDC



014CA



260Z



319



380



Model Selection



WOB-L® Piston

2110Z



2250Z



2380



2450



Pressure

| MODEL | MOTOR CAPACITY | | FLOW cfm @ psi | | | | | | | | | MAXIMUM PRESSURE psi | |
|---------------|----------------------|-------|-------------------|------|------|------|------|------|------|------|--------------------------|--------------------------|--|
| | VOLTAGE | TYPE* | 0 | 5 | 10 | 20 | 40 | 60 | 80 | 100 | CONTINUOUS | INTERMITTENT | |
| 617CA22 | 115/60/1 | SP | 0.78 | 0.74 | 0.69 | 0.59 | 0.42 | 0.31 | 0.18 | 0.07 | 100.0 | 100.0 | |
| 617CA32 | 115/60/1 | SP | 1.22 | 1.19 | 1.10 | 0.97 | 0.74 | 0.56 | - | - | 50.0 | 60.0 | |
| 617CD22 | 220/50/1 | SP | 0.69 | 0.65 | 0.59 | 0.50 | 0.35 | 0.25 | 0.17 | 0.10 | 100.0 | 100.0 | |
| 617CD32 | 220/50/1 | SP | 1.01 | 0.97 | 0.91 | 0.80 | 0.59 | - | - | - | 40.0 | 40.0 | |
| 660E48XNTLSXX | 115/60/1 | PSC | 2.40 | 2.31 | 2.20 | 2.01 | 1.65 | - | - | - | 45.0 | 45.0 | |
| 660N48XNTLSXX | 220-240/50/60/1 | PSC | 2.40 | 2.31 | 2.20 | 2.01 | 1.65 | - | - | - | 45.0 (50Hz), 50.0 (60Hz) | 45.0 (50Hz), 50.0 (60Hz) | |
| 660S48XNTLSXX | 100/50/60/1 | PSC | 2.40 | 2.31 | 2.20 | 2.01 | 1.65 | - | - | - | 30.0 (50Hz), 50.0 (60Hz) | 30.0 (50Hz), 50.0 (60Hz) | |
| 668E44XNTLSXX | 115/60/1 | PSC | 1.61 | 1.56 | 1.52 | 1.39 | 1.19 | 1.01 | 0.84 | 0.71 | 100.0 | 100.0 | |
| 668N44XNTLSXX | 220-240/50/60/1 | PSC | 1.61 | 1.56 | 1.52 | 1.39 | 1.19 | 1.01 | 0.84 | 0.71 | 100.0 | 100.0 | |
| 668S44XNTLSXX | 100/50/60/1 | PSC | 1.61 | 1.56 | 1.52 | 1.39 | 1.19 | 1.01 | 0.84 | 0.71 | 100.0 | 100.0 | |
| 1207PHI80 | 220-240/50/1 | PSC | 3.60 | 3.52 | 3.47 | 3.24 | 2.92 | 2.52 | 2.16 | 1.85 | 125.0 | 125.0 | |
| 1207PK80 | 115/60/1 | CS | 3.78 | 3.72 | 3.66 | 3.43 | 3.04 | 2.69 | 2.33 | 1.99 | 125.0 | 125.0 | |
| 2110ZA26/12 | 12 | BLDC | 0.50 | 0.48 | 0.45 | 0.40 | - | - | - | - | 30.0 | 30.0 | |
| 2220ZA30/12 | 12 | BLDC | 1.14 | 1.09 | 1.06 | 1.00 | - | - | - | - | 30.0 | 30.0 | |
| 2250ZC35/24 | 24 | BLDC | 1.15 | 0.97 | 0.89 | 0.82 | - | - | - | - | 30.0 | 30.0 | |
| 2380BES44 | 115/60/1,100/50/60/1 | PSC | - | - | - | - | - | - | - | - | - | - | |
| 2380BGU44 | 230/60/1,230/50/1 | PSC | - | - | - | - | - | - | - | - | - | - | |
| 2380CE32 | 115/60/1 | PSC | 2.30 | 2.19 | 2.04 | 1.84 | 1.48 | 1.19 | 0.89 | 0.61 | 100.0 | 100.0 | |
| 2380CS32 | 100/50/60/1 | PSC | 2.30 | 2.19 | 2.04 | 1.84 | 1.48 | 1.19 | 0.89 | 0.61 | 100.0 | 100.0 | |
| 2380CUU32 | 230/50/1 | PSC | 2.00 | 1.88 | 1.71 | 1.58 | 1.24 | 0.96 | 0.71 | 0.47 | 100.0 | 100.0 | |
| 2380CE38 | 115/60/1 | PSC | 2.70 | 2.62 | 2.45 | 2.20 | 1.75 | 1.35 | - | - | 75.0 | 75.0 | |
| 2380CUU38 | 230/50/1 | PSC | 2.30 | 2.21 | 2.10 | 1.90 | 1.50 | 1.10 | - | - | 75.0 | 75.0 | |
| 2380CE44 | 115/60/1 | PSC | 3.20 | 3.10 | 2.90 | 2.60 | 2.13 | - | - | - | 30.0 | 30.0 | |
| 2380CUU44 | 230/50/1 | PSC | 2.70 | 2.60 | 2.49 | 2.23 | 1.80 | - | - | - | 30.0 | 30.0 | |
| 2450AE44 | 115/60/1 | PSC | 3.00 | 2.87 | 2.70 | 2.57 | 2.45 | - | - | - | 30.0 | 30.0 | |
| 2450AUU44 | 230/50/1 | PSC | 2.60 | 2.50 | 2.37 | 2.11 | - | - | - | - | 30.0 | 30.0 | |
| 2505CE38 | 115/60/1 | PSC | 3.40 | 3.23 | 3.06 | 2.77 | 2.22 | 1.75 | 1.25 | 0.75 | 100.0 | 100.0 | |
| 2505CG38 | 230/60/1 | PSC | 3.40 | 3.32 | 3.03 | 2.72 | 2.16 | 1.67 | - | - | 60.0 | 60.0 | |
| 2505CHI45 | 220-240/50/1 | PSC | 3.40 | 3.27 | 3.05 | 2.78 | - | - | - | - | 30.0 | 30.0 | |

*SP = Shaded Pole, PSC = Permanent Split Capacitor, BLDC=Brushless DC, CS = Capacitor Start

Note: Minimum release quantities or regional availability may apply. Consult factory.

Note: 50/60 Hz voltage - flow values listed at 60 Hz.

Model Selection

THOMAS
by Gardner Denver

 **WOB-L® Piston**

| Vacuum | | | | | | | | | | | |
|--------------|----------------------|-------|----------------------|------|------|------|------|------|--|---------------------------------|---------------|
| MODEL | MOTOR CAPACITY | | FLOW cfm @ in. Hg | | | | | | MAX. VACUUM % local barometer in. Hg | DIMENSIONS (H x W x L) in | WEIGHT lb. |
| | VOLTAGE | TYPE* | 0 | 5 | 10 | 15 | 20 | 25 | | | |
| 617CA22 | 115/60/1 | SP | 0.78 | 0.63 | 0.47 | 0.31 | 0.16 | 0.02 | 25.6 | 6.77 x 5.00 x 7.89 | 11.0 |
| 617CA32 | 115/60/1 | SP | 1.22 | 0.87 | 0.65 | 0.45 | 0.23 | - | 26.8 | 6.77 x 5.00 x 7.89 | 11.0 |
| 617CD22 | 230/50/1 | SP | 0.69 | 0.53 | 0.40 | 0.26 | 0.14 | - | 25.6 | 6.77 x 5.00 x 7.89 | 11.0 |
| 617CD32 | 230/50/1 | SP | 1.01 | 0.75 | 0.55 | 0.35 | 0.19 | - | 26.2 | 6.77 x 5.00 x 7.89 | 11.0 |
| 660E48XNLSXX | 115/60/1 | PSC | 2.40 | 1.81 | 1.40 | 1.01 | 0.58 | 0.19 | 92% | 7.19 x 5.18 x 7.09 | 14.4 |
| 660N48XNLSXX | 220-240/50/60/1 | PSC | 2.40 | 1.81 | 1.40 | 1.01 | 0.58 | 0.19 | 92% | 7.19 x 5.18 x 7.09 | 13.5 |
| 660S48XNLSXX | 100/50/60/1 | PSC | 2.40 | 1.81 | 1.40 | 1.01 | 0.58 | 0.19 | 92% | 7.19 x 5.18 x 7.09 | 14.4 |
| 668E44XNLSXX | 115/60/1 | PSC | 1.61 | 1.30 | 0.99 | 0.71 | 0.41 | 0.13 | 93% | 7.19 x 5.18 x 7.09 | 13.3 |
| 668N44XNLSXX | 220-240/50/60/1 | PSC | 1.61 | 1.30 | 0.99 | 0.71 | 0.41 | 0.13 | 93% | 7.19 x 5.18 x 7.09 | 13.3 |
| 668S44XNLSXX | 100/50/60/1 | PSC | 1.61 | 1.30 | 0.99 | 0.71 | 0.41 | 0.13 | 93% | 7.19 x 5.18 x 7.09 | 13.3 |
| 1207PHI80 | 220-240/50/1 | PSC | 3.60 | 2.45 | 1.80 | 1.25 | 0.66 | - | 24.3 | 10.05 x 6.55 x 10.66 | 26.0 |
| 1207PK80 | 115/60/1 | CS | 3.78 | 2.60 | 1.98 | 1.30 | 0.70 | 0.10 | 25.9 | 10.02 x 6.53 x 10.70 | 26.0 |
| 2110ZA26/12 | 12 | BLDC | - | - | - | - | - | - | - | 2.99 x 2.20 x 3.54 | 0.85 |
| 2220ZA30/12 | 12 | BLDC | - | - | - | - | - | - | - | 3.77 x 2.64 x 4.70 | 1.5 |
| 2250ZC35/24 | 24 | BLDC | 1.92 | 1.43 | 1.06 | 0.74 | 0.39 | 0.94 | 25.9 | 4.27 x 3.10 x 6.05 | 2.8 |
| 2380BES44 | 115/60/1,100/50/60/1 | PSC | 3.00 | 2.50 | 1.90 | 1.30 | 0.70 | 0.20 | 91% | 6.79 x 5.14 x 9.31 | 12.0 |
| 2380BGUU44 | 230/60/1,230/50/1 | PSC | 3.00 | 2.50 | 1.90 | 1.30 | 0.70 | 0.20 | 91% | 6.79 x 5.14 x 9.31 | 12.0 |
| 2380CE32 | 115/60/1 | PSC | 2.30 | 1.94 | 1.46 | 1.01 | 0.57 | 0.16 | 90% | 6.73 x 5.14 x 9.31 | 12.0 |
| 2380CS32 | 100/50/60/1 | PSC | 2.30 | 1.94 | 1.46 | 1.01 | 0.57 | 0.16 | 90% | 6.73 x 5.14 x 9.31 | 12.0 |
| 2380CUU32 | 230/50/1 | PSC | 2.00 | 1.67 | 1.26 | 0.86 | 0.48 | 0.13 | 90% | 6.73 x 5.14 x 9.31 | 12.0 |
| 2380CE38 | 100/50/60/1 | PSC | 2.70 | 2.15 | 1.63 | 1.12 | 0.65 | 0.16 | 91% | 6.76 x 5.14 x 9.31 | 12.0 |
| 2380CUU38 | 230/50/1 | PSC | 2.30 | 1.85 | 1.40 | 0.95 | 0.52 | 0.10 | 91% | 6.76 x 5.14 x 9.31 | 12.0 |
| 2380CE44 | 115/60/1 | PSC | 3.20 | 2.50 | 1.88 | 1.31 | 0.75 | 0.24 | 92% | 6.79 x 5.14 x 8.94 | 12.0 |
| 2380CUU44 | 230/50/1 | PSC | 2.70 | 2.25 | 1.70 | 1.23 | 0.72 | 0.23 | 92% | 6.79 x 5.14 x 8.94 | 12.0 |
| 2450AE44 | 115/60/1 | PSC | - | - | - | - | - | - | - | 6.41 x 3.90 x 8.32 | 9.5 |
| 2450AUU44 | 230/50/1 | PSC | - | - | - | - | - | - | - | 6.41 x 3.90 x 8.32 | 9.5 |
| 2505CE38 | 115/60/1 | PSC | 3.40 | 2.69 | 2.04 | 1.37 | 0.74 | 0.17 | 90% | 6.51 x 4.64 x 9.34 | 14.0 |
| 2505CG38 | 230/60/1 | PSC | 3.40 | 2.64 | 1.93 | 1.30 | 0.60 | 0.13 | 90% | 6.51 x 4.64 x 9.34 | 14.0 |
| 2505CHI45 | 220-240/50/1 | PSC | 3.40 | 2.63 | 1.98 | 1.37 | 0.66 | 0.15 | 90% | 6.51 x 4.64 x 9.34 | 14.0 |

*SP = Shaded Pole, PSC = Permanent Split Capacitor, BLDC=Brushless DC, CS = Capacitor Start

Note: Minimum release quantities or regional availability may apply. Consult factory.

Note: 50/60 Hz voltage - flow values listed at 60 Hz.

617



668



1207



2505



Model Selection



WOB-L® Piston

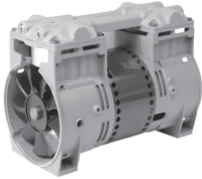
| Pressure | | | | | | | | | | | | |
|----------------|------------------------|-------|-------------------|------|------|------|------|------|------|------|--------------------------|--------------------------|
| MODEL | MOTOR CAPACITY | | FLOW cfm @ psi | | | | | | | | MAXIMUM PRESSURE psi | |
| | VOLTAGE | TYPE* | 0 | 5 | 10 | 20 | 40 | 60 | 80 | 100 | CONTINUOUS | INTERMITTENT |
| 2660E48XNTLSXX | 115/60/1 | PSC | 4.60 | 4.43 | 4.25 | 3.92 | 3.63 | - | - | - | 40.0 | 40.0 |
| 2660N48XNTLSXX | 220-240/50/60/1 | PSC | 4.60 | 4.43 | 4.25 | 3.92 | 3.63 | - | - | - | 45.0 | 45.0 |
| 2660S48XNTLSXX | 100/50/60/1 | PSC | 4.60 | 4.43 | 4.25 | 3.92 | - | - | - | - | 25.0 (50Hz), 20.0 (60Hz) | 25.0 (50Hz), 20.0 (60Hz) |
| 2665PE40 | 115/60/1 | PSC | 3.86 | 3.70 | 3.50 | 3.15 | 2.60 | 2.19 | 1.75 | 1.44 | 100.0 | 120.0 |
| 2665PHI44 | 220-240/50/1 | PSC | 3.35 | 3.22 | 3.15 | 2.78 | 2.25 | 1.85 | 1.43 | 1.09 | 100.0 | 120.0 |
| 2668E44XNTLSXX | 115/60/1 | PSC | 3.06 | 2.95 | 2.89 | 2.65 | 2.24 | 1.88 | 1.57 | 1.32 | 100.0 | 100.0 |
| 2668N44XNTLSXX | 220-240/50/60/1 | PSC | 3.06 | 2.95 | 2.89 | 2.65 | 2.24 | 1.88 | 1.57 | 1.32 | 100.0 | 100.0 |
| 2668S44XNTLSXX | 100/50/60/1 | PSC | 3.06 | 2.95 | 2.89 | 2.65 | 2.24 | 1.88 | 1.57 | 1.32 | 100.0 | 100.0 |
| 2685PE40 | 115/60/1 | PSC | 3.86 | 3.70 | 3.50 | 3.15 | 2.60 | 2.19 | 1.75 | 1.44 | 100.0 | 120.0 |
| 2685PHI44 | 220-240/50/1 | PSC | 3.35 | 3.22 | 3.15 | 2.78 | 2.25 | 1.85 | 1.43 | 1.09 | 100.0 | 120.0 |
| 2688TE44/38 | 115/60/1 | PSC | 1.52 | 1.48 | 1.45 | 1.41 | 1.35 | 1.32 | 1.30 | 1.28 | 160.0 | 160.0 |
| 2688TGH144/38 | 220-240/50/1, 230/60/1 | PSC | 1.52 | 1.48 | 1.45 | 1.41 | 1.35 | 1.32 | 1.30 | 1.28 | 160.0 | 160.0 |
| 2688VE44 | 115/60/1 | PSC | - | - | - | - | - | - | - | - | - | - |
| 2688VGH144 | 220-240/50/1, 230/60/1 | PSC | - | - | - | - | - | - | - | - | - | - |
| 2688VS44 | 100/50/60/1 | PSC | - | - | - | - | - | - | - | - | - | - |
| 2755BE75 | 115/60/1 | PSC | - | - | - | - | - | - | - | - | - | - |
| 2755BGHI75 | 220-240/50/1, 230/60/1 | PSC | - | - | - | - | - | - | - | - | - | - |
| 2755CE60 | 115/60/1 | PSC | 6.50 | 6.23 | 5.98 | 5.40 | - | - | - | - | 15.0 | 15.0 |
| 2755CGHI60 | 220-240/50/1, 230/60/1 | PSC | 5.60 | 5.32 | 5.10 | 4.60 | - | - | - | - | 20.0 | 20.0 |
| 2755TE48/40 | 115/60/1 | PSC | 2.60 | 2.50 | 2.40 | 2.22 | 2.00 | 1.95 | 1.90 | 1.85 | 160.0 | 160.0 |
| 2755TGH152/48 | 220-240/50/1, 230/60/1 | PSC | 2.75 | 2.60 | 2.50 | 2.40 | 2.20 | 2.14 | 2.08 | 2.03 | 175.0 | 175.0 |
| 2755VEF75 | 115/60/1, 110/50/1 | PSC | - | - | - | - | - | - | - | - | - | - |
| 2755VHI75 | 230/50/1 | PSC | - | - | - | - | - | - | - | - | - | - |
| 2775CE50 | 115/60/1 | PSC | 5.50 | 5.30 | 5.05 | 4.59 | 3.78 | 3.09 | 2.47 | 1.96 | 100.0 | 100.0 |
| 2775CGHI50 | 220-240/50/1, 230/60/1 | PSC | 4.60 | 4.40 | 4.24 | 3.91 | 3.22 | 2.63 | 2.10 | 1.63 | 100.0 | 100.0 |
| 2807CE72 | 115/60/1 | PSC | 6.60 | 6.40 | 6.20 | 5.90 | 5.13 | 4.35 | 3.75 | 3.05 | 50.0 | 120.0 |
| 2807CGHI72 | 220-240/50/1, 230/60/1 | PSC | 6.60 | 6.40 | 6.20 | 5.90 | 5.13 | 4.35 | 3.75 | 3.05 | 50.0 | 120.0 |

*PSC = Permanent Split Capacitor

Note: Minimum release quantities or regional availability may apply. Consult factory.

Note: 50/60 Hz voltage - flow values listed at 60 Hz.

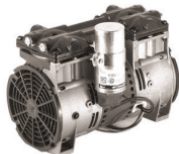
2660/2668



2665PE40



2685PE40



Model Selection

THOMAS
by Gardner Denver

 **WOB-L® Piston**

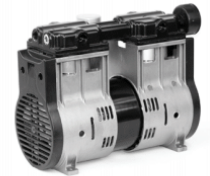
| Vacuum | | | | | | | | | | | |
|----------------|------------------------|-------|----------------------|------|------|------|------|------|--|---------------------------------|---------------|
| MODEL | MOTOR CAPACITY | | FLOW cfm @ in. Hg | | | | | | MAX. VACUUM % local barometer in. Hg | DIMENSIONS (H x W x L) in | WEIGHT lb. |
| | VOLTAGE | TYPE* | 0 | 5 | 10 | 15 | 20 | 25 | | | |
| 2660E48XNTLSXX | 115/60/1 | PSC | 4.60 | 3.61 | 2.75 | 1.93 | 1.11 | 0.34 | 92% | 7.09 x 5.18 x 9.31 | 17.6 |
| 2660N48XNTLSXX | 220-240/50/60/1 | PSC | 4.60 | 3.61 | 2.75 | 1.93 | 1.11 | 0.34 | 92% | 7.09 x 5.18 x 9.31 | 17.1 |
| 2660S48XNTLSXX | 100/50/60/1 | PSC | 4.60 | 3.61 | 2.75 | 1.93 | 1.11 | 0.34 | 92% | 7.09 x 5.18 x 9.31 | 17.6 |
| 2665PE40 | 115/60/1 | PSC | - | - | - | - | - | - | - | 7.09 x 5.38 x 9.31 | 16.0 |
| 2665PHI44 | 220-240/50/1 | PSC | - | - | - | - | - | - | - | 7.09 x 5.38 x 9.31 | 16.0 |
| 2668E44XNTLSXX | 115/60/1 | PSC | 3.06 | 2.42 | 1.81 | 1.22 | 0.65 | 0.11 | 93% | 7.09 x 5.18 x 9.31 | 16.0 |
| 2668N44XNTLSXX | 220-240/50/60/1 | PSC | 3.06 | 2.42 | 1.81 | 1.22 | 0.65 | 0.11 | 93% | 7.09 x 5.18 x 9.31 | 16.0 |
| 2668S44XNTLSXX | 100/50/60/1 | PSC | 3.06 | 2.42 | 1.81 | 1.22 | 0.65 | 0.11 | 93% | 7.09 x 5.18 x 9.31 | 16.0 |
| 2685PE40 | 115/60/1 | PSC | - | - | - | - | - | - | - | 7.09 x 5.38 x 9.77 | 16.4 |
| 2685PHI44 | 220-240/50/1 | PSC | - | - | - | - | - | - | - | 7.09 x 5.38 x 9.77 | 16.4 |
| 2688TE44/38 | 115/60/1 | PSC | - | - | - | - | - | - | - | 7.39 x 6.68 x 9.73 | 16.0 |
| 2688TGH144/38 | 220-240/50/1, 230/60/1 | PSC | - | - | - | - | - | - | - | 7.39 x 6.68 x 9.73 | 15.0 |
| 2688VE44 | 115/60/1 | PSC | 1.60 | 1.20 | 0.98 | 0.69 | 0.48 | 0.16 | 29.0 | 7.40 x 6.61 x 9.73 | 16.4 |
| 2688VGH144 | 220-240/50/1, 230/60/1 | PSC | 1.60 | 1.20 | 0.98 | 0.69 | 0.48 | 0.16 | 29.0 | 7.40 x 6.61 x 9.73 | 14.6 |
| 2688VS44 | 100/50/60/1 | PSC | 1.60 | 1.20 | 0.98 | 0.69 | 0.48 | 0.16 | 29.0 | 7.40 x 6.61 x 9.73 | 16.4 |
| 2755BE75 | 115/60/1 | PSC | 7.50 | 6.21 | 4.73 | 3.29 | 1.87 | 0.53 | 93% | 9.32 x 5.37 x 10.35 | 21.5 |
| 2755BGHI75 | 220-240/50/1, 230/60/1 | PSC | 6.60 | 5.27 | 4.7 | 3.2 | 1.8 | 0.5 | 93% | 9.32 x 5.37 x 10.35 | 22.6 |
| 2755CE60 | 115/60/1 | PSC | 6.50 | 5.29 | 4.02 | 2.72 | 1.49 | 0.31 | 91% | 9.32 x 5.37 x 10.35 | 21.5 |
| 2755CGHI60 | 220-240/50/1, 230/60/1 | PSC | 5.60 | 4.50 | 3.37 | 2.31 | 1.28 | 0.28 | 91% | 9.32 x 5.37 x 10.35 | 22.6 |
| 2755TE48/40 | 115/60/1 | PSC | - | - | - | - | - | - | - | 9.32 x 5.37 x 10.75 | 21.7 |
| 2755TGH152/48 | 220-240/50/1, 230/60/1 | PSC | - | - | - | - | - | - | - | 9.32 x 5.37 x 10.75 | 23.0 |
| 2755VEF75 | 115/60/1, 110/50/1 | PSC | 3.90 | 3.21 | 2.51 | 1.86 | 1.16 | 0.49 | 98% | 9.32 x 5.37 x 10.35 | 21.5 |
| 2755VHI75 | 230/50/1 | PSC | 3.14 | 2.65 | 2.05 | 1.48 | 0.90 | 0.40 | 98% | 9.32 x 5.37 x 10.35 | 22.6 |
| 2775CE50 | 115/60/1 | PSC | 5.50 | 3.92 | 2.96 | 2.02 | 1.12 | 0.27 | 90% | 9.80 x 6.10 x 12.40 | 25.0 |
| 2775CGHI50 | 220-240/50/1, 230/60/1 | PSC | 4.60 | 3.39 | 2.57 | 1.76 | 1.00 | 0.22 | 90% | 9.80 x 6.10 x 12.40 | 25.0 |
| 2807CE72 | 115/60/1 | PSC | 6.60 | 4.30 | 2.66 | 1.80 | 0.88 | - | 25.0 | 10.05 x 7.31 x 15.60 | 39.0 |
| 2807CGHI72 | 220-240/50/1, 230/60/1 | PSC | 6.60 | 4.30 | 2.66 | 1.80 | 0.88 | - | 25.0 | 10.05 x 7.31 x 15.60 | 39.0 |

*PSC = Permanent Split Capacitor

Note: Minimum release quantities or regional availability may apply. Consult factory.

Note: 50/60 Hz voltage - flow values listed at 60 Hz.

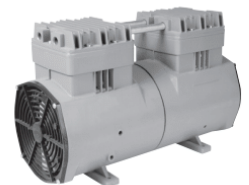
2755



2775



2807



Model Selection



WOB-L® Refrigerant Recovery

520



Pressure

| MODEL | MOTOR CAPACITY | | FLOW cfm @ psi | | | | | | | MAXIMUM PRESSURE psi | | |
|----------|-----------------|-------|-------------------|------|------|------|------|------|------|-------------------------|-------|---------|
| | VOLTAGE | TYPE* | 0 | 50 | 100 | 150 | 250 | 350 | 400 | 435 | INLET | EXHAUST |
| 500CAR75 | 100-115/50/60 | RDC | 0.41 | 0.31 | 0.29 | 0.26 | 0.23 | 0.16 | 0.13 | 0.13 | 35.0 | 435.0 |
| 500CDR75 | 230/50/60 | RDC | 0.41 | 0.31 | 0.29 | 0.26 | 0.23 | 0.16 | 0.13 | 0.13 | 35.0 | 435.0 |
| 520CJ75 | 100/50/60/1 | CS | 0.50 | 0.39 | 0.33 | 0.32 | 0.32 | 0.30 | 0.29 | 0.27 | 35.0 | 435.0 |
| 520CK75 | 115/60/1 | CS | 0.50 | 0.39 | 0.33 | 0.32 | 0.32 | 0.30 | 0.29 | 0.27 | 35.0 | 435.0 |
| 520CL75 | 220-240/50/1 | CS | 0.36 | 0.31 | 0.28 | 0.27 | 0.26 | 0.24 | 0.24 | 0.23 | 35.0 | 435.0 |
| 2520CK60 | 115/60/1 | CS | 1.00 | 0.85 | 0.73 | 0.61 | 0.50 | 0.46 | 0.44 | 0.42 | 35.0 | 435.0 |
| 2520CL60 | 220-240/50/60/1 | CS | 0.74 | 0.63 | 0.52 | 0.45 | 0.40 | 0.38 | 0.36 | 0.35 | 35.0 | 435.0 |

*RDC = Rectified DC Permanent Magnet, CS = Capacitor Start

Note: Minimum release quantities or regional availability may apply. Consult factory.

Note: 50/60 Hz voltage - flow values listed at 60 Hz.

TA-3101 DC
TA-4101 DC



Articulated Piston

Pressure

| MODEL | MOTOR CAPACITY | | FLOW cfm @ psi | | | | | | | MAXIMUM PRESSURE psi | | |
|---------------------|---------------------|-------|-------------------|------|------|------|------|------|------|-------------------------|------------|--------------|
| | VOLTAGE | TYPE* | 0 | 5 | 10 | 20 | 40 | 60 | 80 | 100 | CONTINUOUS | INTERMITTENT |
| TA-3101-DC (270024) | 12 | PM | 1.70 | 1.62 | 1.55 | 1.40 | 1.18 | 1.00 | 0.85 | 0.70 | 100.0 | 100.0 |
| TA-4101-DC (270025) | 12 | PM | 2.20 | 2.07 | 1.95 | 1.75 | 1.45 | 1.25 | 1.10 | 0.95 | 100.0 | 100.0 |
| TA-4101-DC (270047) | 24 | PM | 2.20 | 2.07 | 1.95 | 1.75 | 1.45 | 1.25 | 1.10 | 0.95 | 100.0 | 100.0 |
| TA-5102-DC (270058) | 12 | PM | 4.06 | 3.81 | 3.54 | 3.42 | 3.02 | 2.72 | 2.12 | 1.61 | 100.0 | 100.0 |
| TA-3051 (270002) | 115/230/60/1 | CS | 2.00 | 1.92 | 1.85 | 1.70 | 1.50 | - | - | - | 50.0 | 50.0 |
| TA-3052 (270006) | 115/230/60/1 | CS | 2.50 | 2.40 | 2.30 | 2.10 | 1.80 | - | - | - | 50.0 | 50.0 |
| TA-3101 (270005) | 115/230/60/1 | CS | 1.60 | 1.50 | 1.40 | 1.25 | 1.03 | 0.85 | 0.66 | 0.60 | 100.0 | 100.0 |
| TA-4051 (270014) | 115/230/60/1 | CS/CR | 2.80 | 2.72 | 2.65 | 2.45 | 2.10 | - | - | - | 50.0 | 50.0 |
| TA-4052 (270007) | 115/230/60/1 | CS | 3.30 | 3.17 | 3.05 | 2.80 | 2.40 | - | - | - | 50.0 | 50.0 |
| TA-4101 (270015) | 115/230/60/1 | CS/CR | 2.20 | 2.12 | 2.05 | 1.90 | 1.65 | 1.45 | 1.25 | 1.10 | 100.0 | 100.0 |
| TA-4102 (270010) | 115/230/60/1 | CS | 2.60 | 2.54 | 2.44 | 2.20 | 1.80 | 1.60 | 1.35 | 1.20 | 50.0 | 50.0 |
| TA-4172 (270072) | 115/230/60/1 | CS | 1.40 | 1.38 | 1.35 | 1.35 | 1.30 | 1.25 | 1.20 | 1.15 | 175.0 | 175.0 |
| TA-5052 (270008) | 115/230/60/1 | CS | 4.30 | 4.17 | 4.00 | 3.90 | 3.41 | - | - | - | 50.0 | 50.0 |
| TA-5052 (270039) | 110/220-240/50/1 | CS | 3.40 | 3.30 | 3.20 | 3.00 | 2.65 | - | - | - | 50.0 | 50.0 |
| TA-5102 (270011) | 115/230/60/1 | CS | 3.20 | 3.05 | 2.90 | 2.68 | 2.40 | 2.10 | 1.90 | 1.65 | 100.0 | 100.0 |
| TA-5102 (270040) | 110/220-240/50/1 | CS | 2.55 | 2.42 | 2.30 | 2.15 | 1.90 | 1.70 | 1.50 | 1.30 | 100.0 | 100.0 |
| TA-5102 (270043) | 190/380 208-230/460 | POLY | 3.20 | 3.05 | 2.90 | 2.68 | 2.40 | 2.10 | 1.90 | 1.65 | 100.0 | 100.0 |
| TA-5172 (270073) | 115/230/60/1 | CS | 1.80 | 1.79 | 1.79 | 1.78 | 1.75 | 1.72 | 1.69 | 1.65 | 175.0 | 175.0 |
| TA-5172 (270078) | 110/220-240/50/1 | CS | 1.43 | 1.42 | 1.42 | 1.41 | 1.39 | 1.37 | 1.35 | 1.32 | 175.0 | 175.0 |
| TA-5172 (270076) | 190/380 208-230/460 | POLY | 1.80 | 1.79 | 1.79 | 1.78 | 1.75 | 1.72 | 1.69 | 1.65 | 175.0 | 175.0 |
| TA-6052 (270009) | 115/230/60/1 | CS | 5.20 | 5.05 | 4.90 | 4.65 | 4.25 | - | - | - | 50.0 | 50.0 |
| TA-6102 (270012) | 115/230/60/1 | CS | 4.30 | 4.15 | 4.00 | 3.75 | 3.30 | 2.95 | 2.60 | 2.40 | 100.0 | 100.0 |
| TA-6102 (270042) | 110/220-240/50/1 | CS/CR | 3.45 | 3.32 | 3.20 | 3.00 | 2.65 | 2.35 | 2.05 | 1.90 | 100.0 | 100.0 |
| TA-6102 (270044) | 190/380 208-230/460 | POLY | 4.30 | 4.15 | 4.00 | 3.75 | 3.30 | 2.95 | 2.60 | 2.40 | 100.0 | 100.0 |
| TA-6172 (270080) | 115/230/60/1 | CS/CR | 2.40 | 2.39 | 2.39 | 2.37 | 2.34 | 2.31 | 2.28 | 2.25 | 175.0 | 175.0 |
| TA-6172 (270082) | 190/380 208-230/460 | POLY | 1.92 | 1.91 | 1.90 | 1.89 | 1.86 | 1.84 | 1.81 | 1.79 | 175.0 | 175.0 |
| TA-7102 (270045) | 115/230/60/1 | CS/CR | 5.40 | 5.30 | 5.20 | 5.00 | 4.60 | 4.20 | 3.75 | 3.30 | 100.0 | 100.0 |

*PM = Permanent Magnet, CS = Capacitor Start, CS/CR = Capacitor start/run, POLY = 3 Phase

Note: Minimum release quantities or regional availability may apply. Consult factory.

TA-3101
TA-4101



TA-5102



Model Selection


WOB-L® Refrigerant Recovery

| Vacuum | | | | | | | | | | | |
|----------|-----------------|-------|----------------------|------|------|------|------|------|-----------------------|---------------------------------|---------------|
| MODEL | MOTOR CAPACITY | | FLOW cfm @ in. Hg | | | | | | MAX. VACUUM in. Hg | DIMENSIONS (H x W x L) in | WEIGHT lb. |
| | VOLTAGE | TYPE* | 0 | 5 | 10 | 15 | 20 | 25 | | | |
| 500CAR75 | 100-115/50/60 | RDC | 0.41 | 0.30 | 0.23 | 0.18 | 0.11 | 0.03 | 27.0 | 8.07 x 5.05 x 10.11 | 11.0 |
| 500CDR75 | 230/50/60 | RDC | 0.41 | 0.30 | 0.23 | 0.18 | 0.11 | 0.03 | 27.0 | 8.07 x 5.05 x 10.11 | 11.4 |
| 520CJ75 | 100/50/60/1 | CS | 0.42 | 0.27 | 0.20 | 0.13 | 0.05 | - | 23.0 | 9.06 x 5.82 x 7.83 | 18.5 |
| 520CK75 | 115/60/1 | CS | 0.42 | 0.27 | 0.20 | 0.13 | 0.05 | - | 23.0 | 9.06 x 5.82 x 7.58 | 17.0 |
| 520CL75 | 220-240/50/1 | CS | 0.36 | 0.26 | 0.19 | 0.13 | 0.05 | - | 23.0 | 9.06 x 5.82 x 7.83 | 18.5 |
| 2520CK60 | 115/60/1 | CS | 1.00 | 0.73 | 0.52 | 0.33 | 0.14 | 0.06 | 25.3 | 9.15 x 5.82 x 11.07 | 28.0 |
| 2520CL60 | 220-240/50/60/1 | CS | 0.74 | 0.60 | 0.45 | 0.28 | 0.14 | 0.04 | 25.3 | 9.15 x 5.82 x 11.32 | 29.5 |

*RDC = Rectified DC Permanent Magnet, CS = Capacitor Start

Note: Minimum release quantities or regional availability may apply. Consult factory.

Note: 50/60 Hz voltage - flow values listed at 60 Hz.

500



Articulated Piston

| Vacuum | | | | | | | | | | | |
|---------------------|---------------------|-------|----------------------|---|----|----|----|----|-----------------------|---------------------------------|---------------|
| MODEL | MOTOR CAPACITY | | FLOW cfm @ in. Hg | | | | | | MAX. VACUUM in. Hg | DIMENSIONS (H x W x L) in | WEIGHT lb. |
| | VOLTAGE | TYPE* | 0 | 5 | 10 | 15 | 20 | 25 | | | |
| TA-3101-DC (270024) | 12 | PM | - | - | - | - | - | - | - | 8.61 x 5.83 x 11.54 | 22.0 |
| TA-4101-DC (270025) | 12 | PM | - | - | - | - | - | - | - | 8.61 x 5.83 x 11.54 | 22.0 |
| TA-4101-DC (270047) | 24 | PM | - | - | - | - | - | - | - | 8.61 x 5.83 x 11.54 | 25.0 |
| TA-5102-DC (270058) | 12 | PM | - | - | - | - | - | - | - | 6.81 x 9.96 x 15.32 | 40.0 |
| TA-3051 (270002) | 115/230/60/1 | CS | - | - | - | - | - | - | - | 8.10 x 5.75 x 12.11 | 21.0 |
| TA-3052 (270006) | 115/230/60/1 | CS | - | - | - | - | - | - | - | 6.95 x 10.59 x 14.30 | 33.0 |
| TA-3101 (270005) | 115/230/60/1 | CS | - | - | - | - | - | - | - | 8.10 x 5.75 x 12.11 | 21.0 |
| TA-4051 (270014) | 115/230/60/1 | CS/CR | - | - | - | - | - | - | - | 8.53 x 5.75 x 12.05 | 25.0 |
| TA-4052 (270007) | 115/230/60/1 | CS | - | - | - | - | - | - | - | 6.95 x 10.20 x 14.30 | 36.0 |
| TA-4101 (270015) | 115/230/60/1 | CS/CR | - | - | - | - | - | - | - | 8.10 x 5.75 x 12.05 | 24.0 |
| TA-4102 (270010) | 115/230/60/1 | CS | - | - | - | - | - | - | - | 6.95 x 10.20 x 11.49 | 36.0 |
| TA-4172 (270072) | 115/230/60/1 | CS | - | - | - | - | - | - | - | 6.95 x 11.20 x 14.30 | 45.0 |
| TA-5052 (270008) | 115/230/60/1 | CS | - | - | - | - | - | - | - | 6.91 x 10.59 x 14.30 | 37.0 |
| TA-5052 (270039) | 110/220-240/50/1 | CS | - | - | - | - | - | - | - | 6.91 x 10.59 x 14.30 | 37.0 |
| TA-5102 (270011) | 115/230/60/1 | CS | - | - | - | - | - | - | - | 6.91 x 10.59 x 14.30 | 37.0 |
| TA-5102 (270040) | 110/220-240/50/1 | CS | - | - | - | - | - | - | - | 9.04 x 10.83 x 16.30 | 37.0 |
| TA-5102 (270043) | 190/380 208-230/460 | POLY | - | - | - | - | - | - | - | 6.95 x 10.71 x 14.13 | 37.0 |
| TA-5172 (270073) | 115/230/60/1 | CS | - | - | - | - | - | - | - | 6.95 x 11.59 x 14.30 | 51.0 |
| TA-5172 (270078) | 110/220-240/50/1 | CS | - | - | - | - | - | - | - | 9.04 x 11.20 x 16.30 | 51.0 |
| TA-5172 (270076) | 190/380 208-230/460 | POLY | - | - | - | - | - | - | - | 6.95 x 11.20 x 14.13 | 51.0 |
| TA-6052 (270009) | 115/230/60/1 | CS | - | - | - | - | - | - | - | 9.05 x 11.26 x 17.18 | 45.0 |
| TA-6102 (270012) | 115/230/60/1 | CS | - | - | - | - | - | - | - | 6.91 x 10.20 x 15.30 | 45.0 |
| TA-6102 (270042) | 110/220-240/50/1 | CS/CR | - | - | - | - | - | - | - | 6.91 x 10.20 x 15.30 | 45.0 |
| TA-6102 (270044) | 190/380 208-230/460 | POLY | - | - | - | - | - | - | - | 6.91 x 10.20 x 15.30 | 45.0 |
| TA-6172 (270080) | 115/230/60/1 | CS/CR | - | - | - | - | - | - | - | 6.95 x 11.20 x 14.30 | 56.0 |
| TA-6172 (270082) | 190/380 208-230/460 | POLY | - | - | - | - | - | - | - | 6.95 x 11.20 x 14.30 | 56.0 |
| TA-7102 (270045) | 115/230/60/1 | CS/CR | - | - | - | - | - | - | - | 7.44 x 11.77 x 16.11 | 61.0 |

*PM = Permanent Magnet, CS = Capacitor Start, CS/CR = Capacitor start/run, POLY = 3 Phase

Note: Minimum release quantities or regional availability may apply. Consult factory.

2520



TA-3052



Model Selection



Diaphragm

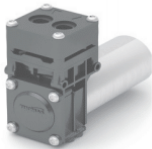
1010 DC



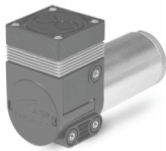
1410 DC



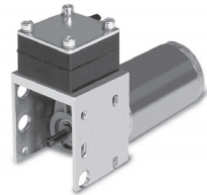
1610



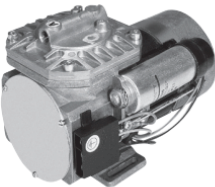
7006 DC



7010 DC



8010



Pressure

| MODEL | MOTOR CAPACITY | | FLOW l/min @ bar | | | | | | | | MAXIMUM PRESSURE bar | |
|---------|-------------------|-------|---------------------|------|------|------|------|-----|-----|-----|-------------------------|--------------|
| | VOLTAGE | TYPE* | 0.0 | 0.5 | 1.0 | 1.5 | 2.0 | 3.0 | 5.0 | 7.0 | CONTINUOUS | INTERMITTENT |
| 1010 | 2.5 - 4 | PM | 0.8 | 0.1 | - | - | - | - | - | - | 0.2 | 0.6 |
| 2002 | 2.0 - 12 | PM | 0.8 | 0.1 | - | - | - | - | - | - | 0.2 | 0.6 |
| 3003 | 4.5 - 12 | PM | 1.0 | 0.1 | - | - | - | - | - | - | 0.2 | 0.6 |
| 3013 | 4.5 - 12 | PM | 1.3 | 0.1 | - | - | - | - | - | - | 0.2 | 0.6 |
| 4002D | 6 | PM | 2.0 | 0.8 | - | - | - | - | - | - | 0.2 | 0.7 |
| 1410D | 12, 24 | PM | 5.5 | 2.5 | - | - | - | - | - | - | 1.0 | 1.0 |
| 1410VD | 12, 24 | PM | 4.3 | 2.5 | 1.4 | 0.6 | - | - | - | - | 0.7 | 1.9 |
| 1420DP | 12, 24 | PM | 11.0 | 5.1 | - | - | - | - | - | - | 1.0 | 1.0 |
| 1420VDP | 12,24 | PM | 8.2 | 6.0 | 3.9 | 1.7 | - | - | - | - | 0.7 | 1.9 |
| 1610 | 12,24 | PM | 8.0 | 6.3 | 4.1 | 1.7 | 0.0 | - | - | - | 0.5 | 2.0 |
| 1620 | 12,24 | PM | 16.5 | 12.3 | 7.9 | 3.7 | - | - | - | - | 0.25 | 1.8 |
| 7006 | 12,24 | PM | 7.2 | 5.3 | 3.9 | 2.8 | 1.9 | - | - | - | 0.8 | 2.5 |
| 7006 | 230/50/1 | PSC | 6.9 | 5.0 | 3.7 | 2.3 | 1.3 | - | - | - | 0.8 | 2.5 |
| 7006ZP | 12,24 | PM | 13.8 | 9.4 | 7.1 | 5.5 | 4.1 | - | - | - | 0.8 | 2.5 |
| 7006ZP | 230/50/1 | PSC | 13.8 | 9.4 | 7.1 | 5.5 | 4.1 | - | - | - | 0.8 | 2.5 |
| 7006ZVR | 12,24 | PM | - | - | - | - | - | - | - | - | - | - |
| 7006ZVR | 230/50/1 | SP | - | - | - | - | - | - | - | - | - | - |
| 7010 | 12,24 | PM | 6.5 | 4.5 | 2.9 | 1.9 | - | - | - | - | 1.0 | 2.2 |
| 7010 | 115/60/1,230/50/1 | SP | 5.8 | 4.3 | 3.0 | 2.0 | - | - | - | - | 1.2 | 2.3 |
| 7010ZDP | 12,24 | PM | 12.0 | 8.1 | 5.1 | 2.5 | - | - | - | - | 0.8 | 2.0 |
| 7010ZDP | 115/60/1,230/50/1 | SP | 10.4 | 7.3 | 4.8 | 2.5 | - | - | - | - | 0.8 | 2.3 |
| 7010ZVR | 12,24 | PM | - | - | - | - | - | - | - | - | - | - |
| 7010ZVR | 230/50/1 | SP | - | - | - | - | - | - | - | - | - | - |
| 7011 | 12,24 | PM | 12.4 | 8.1 | 5.3 | 3.5 | 1.5 | - | - | - | 0.8 | 2.3 |
| 7011ZP | 12,24 | PM | 24.0 | 17.0 | 11.0 | 8.0 | - | - | - | - | 0.5 | 2.3 |
| 7011ZR | 12,24 | PM | - | - | - | - | - | - | - | - | - | - |
| 7015ZR | 12,24 | PM | - | - | - | - | - | - | - | - | - | - |
| 7015ZR | 230/50/1 | PSC | - | - | - | - | - | - | - | - | - | - |
| 7015 | 12,24 | PM | 14.0 | 9.7 | 7.1 | 4.9 | 3.1 | - | - | - | 1.0 | 2.5 |
| 7015ZP | 12,24 | PM | 27.0 | 20.0 | 15.0 | 12.0 | 9.0 | - | - | - | 1.0 | 3.0 |
| 7015ZP | 230/50/1 | PSC | 22.0 | 16.2 | 11.5 | 9.3 | 5.3 | - | - | - | 1.0 | 2.5 |
| 8010 | 230/50/1 | PSC | 23.0 | 16.0 | 11.0 | 8.0 | 4.5 | 1.8 | - | - | 1.0 | 2.8 |
| 8010ZP | 230/50/1 | PSC | 38.0 | 31.0 | 24.0 | 17.0 | 11.0 | 3.5 | - | - | 0.8 | 2.8 |
| 8010ZR | 230/50/1 | PSC | - | - | - | - | - | - | - | - | - | - |
| 8011 | 230/50/1 | PSC | - | - | - | - | - | - | - | - | - | - |
| 8011ZP | 230/50/1 | PSC | - | - | - | - | - | - | - | - | - | - |
| 8011ZR | 230/50/1 | PSC | - | - | - | - | - | - | - | - | - | - |
| 8015 | 230/50/1 | PSC | 28.0 | 22.0 | 17.5 | 13.0 | 10.0 | 3.5 | - | - | 0.8 | 3.0 |
| 8015ZP | 230/50/1 | PSC | - | - | - | - | - | - | - | - | - | - |
| 8015ZR | 230/50/1 | PSC | - | - | - | - | - | - | - | - | - | - |

*PM = Permanent Magnet, SP = Shaded Pole,

*PSC=Permanent Split Capacitor, Consult factory for 60 Hz models - minimum quantities apply.

Note: Minimum release quantities or regional availability may apply. Consult factory.

Model Selection



Diaphragm

| Vacuum | | | | | | | | | | | | |
|---------|----------------|-------|----------------------|------|------|------|------|------|---------------------|---------------------------------|--------------|--|
| MODEL | MOTOR CAPACITY | | FLOW l/min @ mbar | | | | | | MAX. VACUUM mbar | DIMENSIONS (H x W x L) mm | WEIGHT kg | |
| | VOLTAGE | TYPE* | 0 | -100 | -200 | -400 | -600 | -800 | | | | |
| 1010 | 2.5 - 4 | PM | 0.8 | 0.6 | 0.4 | 0.1 | - | - | -500 | 23 x 14 x 33 | 0.02 | |
| 2002 | 2.0 - 10 | PM | 0.8 | 0.6 | 0.4 | - | - | - | -520 | 26 x 17 x 41 | 0.03 | |
| 3003 | 4.5 - 12 | PM | 1.0 | 0.6 | 0.3 | - | - | - | -380 | 37 x 23 x 43 | 0.04 | |
| 3013 | 4.5 - 12 | PM | 1.3 | 0.7 | 0.4 | 0.1 | - | - | -450 | 34 x 23 x 44 | 0.03 | |
| 4002V | 6 | PM | 2.0 | 1.5 | 1.2 | 0.5 | - | - | -600 | 30 x 17 x 53 | 0.05 | |
| 1410V | 12,24 | PM | 5.5 | 4.6 | 3.9 | 2.4 | 1.0 | - | -750 | 54 x 30 x 83 | 0.17 | |
| 1410VD | 12,24 | PM | 4.3 | 3.5 | 2.8 | 1.7 | 0.6 | - | -730 | 54 x 30 x 83 | 0.17 | |
| 1420VP | 12,24 | PM | 11.0 | 9.5 | 8.0 | 5.0 | 2.1 | - | -780 | 75 x 30 x 87 | 0.22 | |
| 1420VDP | 12,24 | PM | 8.2 | 7.0 | 5.8 | 3.2 | 1.0 | - | -730 | 75 x 30 x 87 | 0.22 | |
| 1610 | 12,24 | PM | 8.0 | 6.9 | 5.7 | 3.7 | 1.9 | 0.4 | -900 | 97 x 47 x 120 | 0.64 | |
| 1620 | 12,24 | PM | 16.5 | 14.4 | 12.1 | 7.8 | 4.0 | 0.7 | -870 | 141 x 47 x 138 | 0.75 | |
| 7006 | 12,24 | PM | 7.2 | 5.3 | 4.4 | 2.7 | 1.2 | 0.3 | -850 | 78 x 47 x 123 | 0.60 | |
| 7006 | 230/50/1 | PSC | 6.9 | 5.3 | 4.3 | 2.6 | 1.2 | 0.3 | -850 | 110 x 79 x 141 | 1.6 | |
| 7006ZP | 12,24 | PM | 13.8 | 10.6 | 8.6 | 5.3 | 2.8 | 0.9 | -850 | 78 x 47 x 123 | 0.9 | |
| 7006ZP | 230/50/1 | PSC | 13.8 | 10.6 | 8.6 | 5.3 | 2.8 | 0.9 | -850 | 110 x 79 x 185 | 1.8 | |
| 7006ZVR | 12,24 | PM | 6.6 | 5.7 | 4.8 | 3.2 | 1.9 | 0.7 | -950 | 78 x 47 x 123 | 0.90 | |
| 7006ZVR | 230/50/1 | SP | 7.1 | 6.0 | 5.0 | 3.3 | 1.9 | 0.6 | -950 | 78 x 61 x 123 | 1.8 | |
| 7010 | 12,24 | PM | 6.5 | 4.6 | 3.7 | 2.2 | 1.0 | - | -730 | 86 x 48 x 120 | 0.60 | |
| 7010 | 115/230/1 | SP | 5.8 | 4.5 | 3.5 | 2.1 | 0.9 | - | -780 | 83 x 61 x 109 | 0.95 | |
| 7010ZDP | 12,24 | PM | 12.0 | 10.0 | 8.0 | 4.5 | 1.7 | - | -750 | 82 x 48 x 161 | 0.75 | |
| 7010ZDP | 230/50/1 | SP | 10.4 | 8.6 | 7.0 | 4.2 | 1.8 | - | -750 | 82 x 61 x 158 | 1.45 | |
| 7010ZVR | 12,24 | PM | 6.0 | 5.1 | 4.4 | 2.9 | 1.6 | 0.4 | -900 | 82 x 48 x 161 | 0.75 | |
| 7010ZVR | 230/50/1 | SP | 5.3 | 4.5 | 3.7 | 2.4 | 1.3 | 0.3 | -900 | 82 x 61 x 158 | 1.45 | |
| 7011 | 12,24 | PM | 12.4 | 9.5 | 7.5 | 4.5 | 1.5 | - | -730 | 62 x 87 x 150 | 0.85 | |
| 7011ZP | 12,24 | PM | 24.0 | 20.0 | 15.5 | 3.0 | 2.5 | - | -700 | 48 x 97 x 194 | 1.4 | |
| 7011ZR | 12,24 | PM | 7.0 | 6.2 | 5.6 | 3.5 | 2.0 | 0.8 | -990 | 48 x 97 x 192 | 1.4 | |
| 7015ZR | 12,24 | PM | 12.0 | 10.5 | 9.5 | 7.0 | 4.5 | 2.0 | -920 | 125 x 76 x 164 | 2.3 | |
| 7015ZR | 230/50/1 | PSC | 12.0 | 10.5 | 9.5 | 6.5 | 4.0 | 1.5 | -900 | 137 x 79 x 182 | 2.4 | |
| 7015 | 12,24 | PM | 14.0 | 11.0 | 8.5 | 4.9 | 1.8 | - | -800 | 125 x 80 x 130 | 1.1 | |
| 7015ZP | 12,24 | PM | 27.0 | 21.0 | 17.0 | 11.0 | 5.0 | - | -800 | 125 x 76 x 164 | 2.3 | |
| 7015ZP | 230/50/1 | PSC | 22.0 | 16.8 | 13.2 | 7.8 | 2.9 | - | -800 | 137 x 79 x 182 | 2.4 | |
| 8010 | 230/50/1 | PSC | 23.0 | 14.0 | 11.5 | 7.0 | 3.0 | - | -780 | 122 x 129 x 200 | 2.5 | |
| 8010ZP | 230/50/1 | PSC | 38.0 | 29.0 | 23.0 | 14.0 | 6.0 | - | -780 | 122 x 124 x 255 | 3.4 | |
| 8010ZR | 230/50/1 | PSC | 26.0 | 22.0 | 19.0 | 13.0 | 7.7 | 2.7 | -920 | 122 x 124 x 255 | 3.4 | |
| 8011 | 230/50/1 | PSC | 34.0 | 29.0 | 22.0 | 14.0 | 8.0 | 3.0 | -950 | 143 x 129 x 193 | 3.5 | |
| 8011ZP | 230/50/1 | PSC | 65.0 | 58.0 | 48.0 | 32.0 | 17.0 | 5.8 | -930 | 143 x 129 x 261 | 5.0 | |
| 8011ZR | 230/50/1 | PSC | 34.0 | 26.0 | 22.8 | 16.0 | 10.0 | 4.5 | -990 | 143 x 129 x 261 | 5.0 | |
| 8015 | 230/50/1 | PSC | 28.0 | 20.5 | 16.0 | 10.0 | 5.3 | 1.0 | -830 | 122 x 129 x 200 | 2.5 | |
| 8015ZP | 230/50/1 | PSC | 50.0 | 42.0 | 34.0 | 22.0 | 11.5 | 1.8 | -830 | 122 x 124 x 255 | 3.9 | |
| 8015ZR | 230/50/1 | PSC | 29.0 | 24.5 | 21.0 | 14.5 | 8.6 | 3.2 | -960 | 122 x 124 x 255 | 3.9 | |

*PM = Permanent Magnet, SP = Shaded Pole,

*PSC=Permanent Split Capacitor, Consult factory for 60 Hz models - minimum quantities apply.

Note: Minimum release quantities or regional availability may apply. Consult factory.

2002



3013



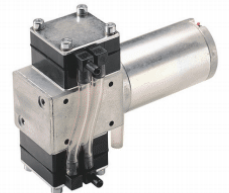
1420 BLDC



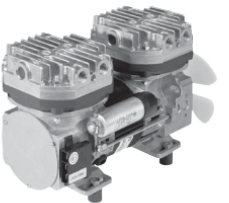
1620 VD



7011 DC



8011 Z



Model Selection



Diaphragm

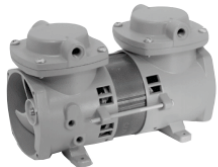
107 AC



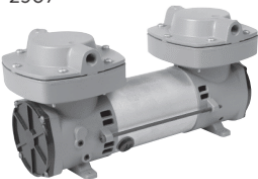
107 DC



2107



2907



| Pressure | | | | | | | | | | | | |
|-----------------|------------------------|-------|-------------------|------|------|------|------|----|----|-----|-------------------------|--------------|
| MODEL | MOTOR CAPACITY | | FLOW cfm @ psi | | | | | | | | MAXIMUM PRESSURE psi | |
| | VOLTAGE | TYPE* | 0 | 5 | 10 | 20 | 40 | 60 | 80 | 100 | CONTINUOUS | INTERMITTENT |
| 007BDC19 | 12 | PM | - | - | - | - | - | - | - | - | - | - |
| 007CDC19 | 12 | PM | 0.65 | 0.61 | 0.50 | 0.41 | - | - | - | - | 15.0 | 25.0 |
| 107AB18XFTLBXX | 100/50/1, 115/60/1 | SP | 0.70 | 0.60 | 0.50 | 0.30 | - | - | - | - | 20.0 | 25.0 |
| 107CDU18XFTLBXX | 220-230/50/1, 230/60/1 | SP | 0.70 | 0.60 | 0.50 | 0.30 | - | - | - | - | 20.0 | 25.0 |
| 107ZC18/24 | 24 | BLDC | 0.96 | 0.77 | 0.63 | 0.40 | - | - | - | - | 35.0 | 35.0 |
| 107I220IFTLBXX | 12 | PM | 1.44 | 1.30 | 1.15 | 0.85 | - | - | - | - | 35.0 | 35.0 |
| 118ZC20/24 | 24 | BLDC | 0.92 | 0.83 | 0.74 | 0.54 | - | - | - | - | 20.0 | 30.0 |
| 118ZC20/24UV | 24 | BLDC | 0.91 | 0.79 | 0.71 | 0.54 | - | - | - | - | 20.0 | 30.0 |
| 907BDC22 | 12 | PM | - | - | - | - | - | - | - | - | - | - |
| 907CDC18 | 12 | PM | 2.05 | 1.67 | 1.30 | 0.72 | - | - | - | - | 30.0 | 30.0 |
| 907ZC18/24 | 24 | BLDC | 2.22 | 1.69 | 1.34 | 0.63 | - | - | - | - | 25.0 | 25.0 |
| 910CDC22/12 | 12 | PM | 1.97 | 1.72 | 1.47 | 1.10 | 0.48 | - | - | - | 25.0 | 40.0 |
| 927CA18 | 115/60/1 | SP | 1.24 | 1.11 | 0.96 | 0.65 | 0.24 | - | - | - | 30.0 | 40.0 |
| 927CD18 | 220/50/1 | SP | 1.15 | 1.00 | 0.87 | 0.61 | 0.21 | - | - | - | 30.0 | 40.0 |
| 2107A18XSTLNXX | 115/60/1 | SP | 1.60 | 1.25 | - | - | - | - | - | - | 5.0 | 5.0 |
| 2107DU18XSTLNXX | 220-230/50/1 | SP | 1.25 | 1.00 | - | - | - | - | - | - | 5.0 | 5.0 |
| 2107VA20 | 115/60/1 | SP | - | - | - | - | - | - | - | - | - | - |
| 2107VD20 | 220/50/1 | SP | - | - | - | - | - | - | - | - | - | - |
| 2119VCDU18 | 220/50/1, 230/50/60/1 | SP | - | - | - | - | - | - | - | - | - | - |
| 2119VE20 | 115/60/1 | PSC | - | - | - | - | - | - | - | - | - | - |
| 2907CDC22/12 | 12 | PM | 3.20 | 2.89 | 2.53 | - | - | - | - | - | 15.0 | 15.0 |

*PM = Permanent Magnet, SP = Shaded Pole, PSC = Permanent Split Capacitor, BLDC=Brushless DC

Note: Minimum release quantities or regional availability may apply. Consult factory.

Note: 50/60 Hz voltage - flow values listed at 60 Hz.

Model Selection



Diaphragm

| Vacuum | | | | | | | | | | | | |
|-----------------|------------------------|-------|----------------------|------|------|------|------|------|--|---------------------------------|---------------|--|
| MODEL | MOTOR CAPACITY | | FLOW cfm @ in. Hg | | | | | | MAX. VACUUM % local barometer in. Hg | DIMENSIONS (H x W x L) in | WEIGHT lb. | |
| | VOLTAGE | TYPE* | 0 | 5 | 10 | 15 | 20 | 25 | | | | |
| 007BDC19 | 12 | PM | 1.15 | 0.75 | 0.55 | 0.34 | 0.15 | - | 23.0 | 5.03 x 2.36 x 6.10 | 2.9 | |
| 007CDC19 | 12 | PM | 0.65 | 0.48 | 0.34 | 0.21 | - | - | 23.0 | 5.12 x 3.35 x 6.17 | 2.9 | |
| 107AB18XFTLBXX | 100/50/1, 115/60/1 | SP | 0.70 | 0.57 | 0.45 | 0.33 | 0.20 | - | 75% | 4.68 x 4.25 x 6.35 | 5.1 | |
| 107CDU18XFTLBXX | 220-230/50/1, 230/60/1 | SP | 0.70 | 0.57 | 0.45 | 0.33 | 0.20 | - | 75% | 4.68 x 4.25 x 6.35 | 5.1 | |
| 107ZC18/24 | 24 | BLDC | 0.96 | 0.69 | 0.46 | 0.29 | 0.12 | - | 23.0 | 4.68 x 4.25 x 6.08 | 4.5 | |
| 107I220IFTLBXX | 12 | PM | 1.45 | 1.10 | 0.80 | 0.50 | 0.20 | - | 75% | 4.68 x 4.25 x 7.17 | 4.5 | |
| 118ZC20/24 | 24 | BLDC | 0.97 | 0.67 | 0.48 | 0.28 | 0.14 | - | 24.2 | 4.87 x 4.26 x 6.09 | 4.4 | |
| 118ZC20/24UV | 24 | BLDC | 0.94 | 0.76 | 0.54 | 0.35 | 0.16 | - | 23.8 | 4.87 x 4.26 x 6.09 | 4.4 | |
| 907BDC22 | 12 | PM | 2.13 | 1.34 | 0.88 | 0.56 | - | - | 24.1 | 5.89 x 4.75 x 7.88 | 6.5 | |
| 907CDC18 | 12 | PM | 2.05 | 1.25 | 0.82 | 0.48 | - | - | 22.2 | 5.89 x 4.75 x 7.88 | 6.5 | |
| 907ZC18/24 | 24 | BLDC | 2.22 | 1.59 | 1.00 | 0.54 | .10 | - | 21.2 | 5.89 x 4.75 x 6.59 | 5.5 | |
| 910CDC22/12 | 12 | PM | 1.97 | 1.53 | 1.05 | 0.65 | 0.28 | - | 24.3 | 5.89 x 4.75 x 7.88 | 8.3 | |
| 927CA18 | 115/60/1 | SP | 1.24 | 0.89 | 0.64 | 0.36 | 0.16 | - | 23.8 | 6.77 x 4.75 x 7.81 | 11.0 | |
| 927CD18 | 220/50/1 | SP | 1.15 | 0.73 | 0.53 | 0.33 | 0.11 | - | 23.8 | 6.77 x 4.75 x 7.81 | 11.0 | |
| 2107A18XSTLNXX | 115/60/1 | SP | 1.60 | 1.10 | 0.74 | 0.43 | 0.14 | - | 75% | 4.71 x 4.25 x 7.47 | 6.0 | |
| 2107DU18XSTLNXX | 220-230/50/1 | SP | 1.25 | 0.88 | .058 | 0.31 | - | - | 70% | 4.71 x 4.25 x 7.47 | 6.0 | |
| 2107VA20 | 115/60/1 | SP | 0.85 | 0.65 | 0.49 | 0.33 | 0.20 | - | 28.2 | 4.71 x 4.25 x 8.11 | 6.3 | |
| 2107VD20 | 220/50/1 | SP | 0.72 | 0.56 | 0.42 | 0.29 | 0.17 | - | 28.3 | 4.71 x 4.25 x 8.11 | 6.3 | |
| 2119VCDU18 | 220/50/1, 230/50/60/1 | SP | 0.73 | 0.62 | 0.48 | 0.35 | 0.22 | 0.08 | 26.9 | 4.85 x 4.20 x 8.67 | 6.3 | |
| 2119VE20 | 115/60/1 | PSC | 0.82 | 0.64 | 0.48 | 0.33 | 0.20 | 0.06 | 27.1 | 5.98 x 5.31 x 8.41 | 7.3 | |
| 2907CDC22/12 | 12 | PM | 3.20 | 2.00 | 1.43 | 0.90 | 0.41 | - | 24.0 | 6.16 x 4.75 x 11.50 | 11.0 | |

*PM = Permanent Magnet, SP = Shaded Pole, PSC = Permanent Splt Capacitor , BLDC=Brushless DC

Note: Minimum release quantities or regional availability may apply. Consult factory.

Note: 50/60 Hz voltage - flow values listed at 60 Hz.

007BDC



907



910



Model Selection

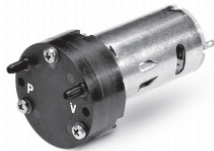


Rotary Vane

G 04 EB



G 045



| Pressure | | | | | | | | | | | | |
|-----------------|----------------|-------|----------------------|------|------|------|------|------|------|------|--------------------------|--------------|
| MODEL | MODEL CAPACITY | | FLOW l/min @ mbar | | | | | | | | MAXIMUM PRESSURE mbar | |
| | VOLTAGE | TYPE* | 0.0 | 50 | 100 | 200 | 400 | 600 | 800 | 1000 | CONTINUOUS | INTERMITTENT |
| G 01-K-LC(L) | 6 | PM | 2.2 | 1.3 | - | - | - | - | - | - | 25.0 | 80.0 |
| G 01-K-EB | 6,12 | PM | 1.4 | - | - | - | - | - | - | - | 10.0 | 40.0 |
| G 01 EB | 3,6,12,24 | PM | 1.6 | 1.2 | 0.7 | - | - | - | - | - | 100.0 | 180.0 |
| G 01-4 EB | 6,12,24 | PM | 1.4 | 1.2 | 0.9 | 0.4 | - | - | - | - | 100.0 | 280.0 |
| G 02 EB | 3,6,12,24 | PM | 3.6 | 2.6 | 1.6 | - | - | - | - | - | 100.0 | 190.0 |
| G 02-4 EB | 6,12,24 | PM | 3.7 | 3.2 | 2.5 | 1.3 | - | - | - | - | 100.0 | 310.0 |
| G 02-8 | 6,12 | PM | 2.7 | 2.5 | 2.2 | 1.6 | 0.5 | - | - | - | 200.0 | 500.0 |
| G 04 EB | 3,6,12,24 | PM | 6.8 | 4.5 | 2.4 | - | - | - | - | - | 40.0 | 150.0 |
| G 04-4 EB | 6,12 | PM | 5.1 | 4.0 | 3.0 | 0.9 | - | - | - | - | 50.0 | 240.0 |
| G 04-8 | 12 | PM | 4.4 | 3.6 | 2.6 | 1.0 | - | - | - | - | 100.0 | 260.0 |
| G 045-LC | 12 | PM | 6.5 | 6.0 | 5.6 | - | - | - | - | - | 100.0 | 750.0 |
| G 045 | 12,24 | PM | 6.1 | 5.8 | 5.5 | 4.5 | 2.9 | 1.3 | - | - | 150.0 | 750.0 |
| G 07 | 12,24 | PM | 21.0 | 21.0 | 20.0 | 19.0 | 15.0 | 13.0 | 9.0 | 6.0 | 200.0 | 1,400.0 |
| G 07-N | 12,24 | PM | 20.0 | 19.0 | 18.0 | 16.0 | - | - | - | - | 250.0 | 900.0 |
| G 08 | 12,24 | PM | 15.5 | 15.0 | 15.0 | 14.0 | 11.0 | 9.0 | 6.0 | 5.0 | 300.0 | 1400.0 |
| G 08-T Series | 12,24 | PM | 19.0 | 19.0 | 18.0 | 17.0 | 13.0 | 11.0 | 7.0 | 6.0 | - | 1400.0 |
| G 08-T Parallel | 12,24 | PM | 36.0 | 36.0 | 34.0 | 33.0 | 25.0 | 21.0 | 12.0 | 10.0 | - | 1,400.0 |
| G09-6 | 12,24 | PM | 11.0 | 9.5 | 8.0 | 5.0 | - | - | - | - | 200.0 | 370.0 |
| BL-G 02-4 | 12 | BLDC | 2.1 | 1.5 | 1.0 | - | - | - | - | - | 150.0 | 200.0 |
| BL-G 085 M | 12 | BLDC | 8.5 | 7.5 | 6.5 | 4.7 | 1.0 | - | - | - | 150.0 | 450.0 |

*PM = Permanent Magnet, BLDC=Brushless DC

Note: Minimum release quantities or regional availability may apply. Consult factory.



Rotary Vane

QR-0030
QR-0050

SR-0015-VP



| Pressure | | | | | | | | | | | | |
|---------------------|--------------------------------------|-------|-------------------|--------------|--------------|------|----|----|----|-----|-------------------------|--------------|
| MODEL | MOTOR CAPACITY | | FLOW cfm @ psi | | | | | | | | MAXIMUM PRESSURE psi | |
| | VOLTAGE | TYPE* | 0 | 5 | 10 | 20 | 40 | 60 | 80 | 100 | CONTINUOUS | INTERMITTENT |
| QR-0030 (291305) | 100-115/200 | SPh | 3.20 | 2.70 | 2.20 | 1.70 | - | - | - | - | 10.0 | 15.0 |
| | 240/60/50/1 | | 2.70 | 2.30 | 1.80 | 1.40 | - | - | - | - | | |
| QR-0050 (291306) | 100-115/200 | SPh | 4.60 | 4.10 | 3.60 | 3.00 | - | - | - | - | 10.0 | 15.0 |
| | 240/60/50/1 | | 4.00 | 3.50 | 3.00 | 2.40 | - | - | - | - | | |
| QR-0080 (291303) | 100-115/200 | CS | 8.00 | 7.35 | 6.80 | 6.20 | - | - | - | - | 10.0 | 15.0 |
| | 240/60/50/1 | | 6.70 | 6.20 | 5.65 | 5.20 | - | - | - | - | | |
| QR-0080 (291309) | 200-240/460/60 200-220/380-415/50 | POLY | 8.00 | 7.35 | 6.80 | 6.20 | - | - | - | - | 10.0 | 15.0 |
| QR-0100 (291310) | 200-240/460/60 200-220/380-415/50 | POLY | 10.00 | 9.40 | 8.80 | - | - | - | - | - | 10.0 | 15.0 |
| | 100-115/200 240/60/50/1 | | 10.00 8.30 | 9.40 7.80 | 8.00 7.30 | - | - | - | - | - | | |
| SR-0015-VP (291275) | 115/60/50/1 | PSC | 1.50 | 1.20 | 1.00 | - | - | - | - | - | 10.0 | 10.0 |
| SR-0015-VP (291293) | 220/240/50/60/1 | PSC | 1.20 | 1.00 | 0.80 | - | - | - | - | - | 10.0 | 10.0 |
| SR-0015-VP (291277) | 115/60/50/1 | SPh | 1.50 | 1.20 | 1.00 | - | - | - | - | - | 10.0 | 10.0 |

*CS = Capacitor Start, SPh = Split Phase, PSC = Permanent Split Capacitor, POLY = 3 Phase

Note: Minimum release quantities or regional availability may apply. Consult factory.

Note: 50/60 Hz voltage - flow values listed at 60 Hz.

Model Selection



Rotary Vane

G-01-K-LC(L)

| Vacuum | | | | | | | | | | | |
|-----------------|----------------|-------|----------------------|------|------|------|------|------|--------------------------------------|---------------------------------|--------------|
| MODEL | MOTOR CAPACITY | | FLOW l/min @ mbar | | | | | | MAX. VACUUM mbar CONT./INTERM. | DIMENSIONS (H x W x L) mm | WEIGHT kg |
| | VOLTAGE | TYPE* | 0 | -100 | -200 | -400 | -600 | -800 | | | |
| G 01-K-LC(L) | 3,6 | PM | 2.2 | - | - | - | - | - | -25 / -70 | 20.5 x 20 x 46 | 0.03 |
| G 01-K-EB | 6,12 | PM | 1.4 | - | - | - | - | - | -10 / -40 | 20.5 x 20 x 53 | 0.04 |
| G 01 EB | 3,6,12,24 | PM | 1.6 | 0.8 | - | - | - | - | -100 / -200 | 29 x 26 x 55 | 0.10 |
| G 01-4 EB | 6,12,24 | PM | 1.4 | 0.9 | 0.4 | - | - | - | -100 / -290 | 29 x 26 x 55 | 0.10 |
| G 02 EB | 3,6,12,24 | PM | 3.6 | 1.6 | - | - | - | - | -100 / -190 | 29 x 26 x 55 | 0.10 |
| G 02-4 EB | 6,12,24 | PM | 3.7 | 2.5 | 1.3 | - | - | - | -100 / -310 | 29 x 26 x 55 | 0.10 |
| G 02-8 | 6,12 | PM | 2.7 | 2.1 | 1.5 | 0.3 | - | - | -200 / -450 | 29 x 26 x 72 | 0.13 |
| G 04 EB | 3,6,12,24 | PM | 6.8 | 2.5 | - | - | - | - | -40 / -160 | 29 x 26 x 62 | 0.10 |
| G 04-4 EB | 6,12 | PM | 5.1 | 3.0 | 1.0 | - | - | - | -50 / -260 | 29 x 26 x 62 | 0.10 |
| G 04-8 | 12 | PM | 4.4 | 2.5 | 0.9 | - | - | - | 100 / -250 | 29 x 26 x 78 | 0.14 |
| G 045-LC | 12 | PM | 6.5 | 5.7 | 4.5 | 1.8 | 0.8 | - | -100 / -630 | 42 x 42 x 90 | 0.25 |
| G 045 | 12,24 | PM | 6.1 | 5.3 | 4.4 | 2.6 | 0.8 | - | -150 / -700 | 42 x 42 x 86 | 0.25 |
| G 07 | 12,24 | PM | 21.0 | 18.0 | 16.0 | 10.0 | 5.0 | - | -200 / -770 | 48 x 48 x 150 | 0.70 |
| G 07-N | 12,24 | PM | 20.0 | 16.2 | 14.2 | 8.5 | 3.0 | - | -300 / -720 | 51 x 51 x 113 | 0.40 |
| G 08 | 12,24 | PM | 15.5 | 13.0 | 12.0 | 8.0 | 5.0 | 1.0 | -300 / -830 | 59 x 59 x 135 | 0.75 |
| G 08-T Series | 12,24 | PM | 19.0 | 17.0 | 15.0 | 11.0 | 7.0 | 3.0 | - / -930 | 59 x 59 x 210 | 1.30 |
| G 08-T Parallel | 12,24 | PM | 36.0 | 32.0 | 27.0 | 19.0 | 10.0 | 2.0 | - / -840 | 59 x 59 x 210 | 1.30 |
| G09-6 | 12,24 | PM | 11.0 | 7.8 | 4.2 | - | - | - | -200 / -350 | 40 x 40 x 60 | 0.30 |
| BL-G 02-4 | 12 | BLDC | 2.1 | 1.0 | - | - | - | - | -150 / -190 | 32 x 32 x 69 | 0.13 |
| BL-G 085 M | 12 | BLDC | 8.5 | 6.7 | 5.0 | 1.7 | - | - | -150 / -500 | 50 x 50 x 44 | 0.15 |

*PM = Permanent Magnet, BLDC=Brushless DC

Note: Minimum release quantities or regional availability may apply. Consult factory.



G 02 EB



G 07 N




Rotary Vane

| Vacuum | | | | | | | | | | | |
|---------------------|--------------------------------------|-------|----------------------|------|------|------|------|-----|-----------------------|---------------------------------|--------------|
| MODEL | MOTOR CAPACITY | | FLOW cfm @ in. Hg | | | | | | MAX. VACUUM in. Hg | DIMENSIONS (H x W x L) in | WEIGHT lb |
| | VOLTAGE | TYPE* | 0 | 5 | 10 | 15 | 20 | 25 | | | |
| QR-0030 (291305) | 100-115/200 240/60/50/1 | SPh | 3.20 | 2.50 | 1.90 | 1.30 | .60 | - | 25.0 | 5.80 x 5.60 x 13.56 | 33.0 |
| QR-0050 (291306) | 100-115/200 240/60/50/1 | SPh | 4.60 | 3.80 | 2.90 | 2.00 | 1.20 | .30 | 26.0 | 5.80 x 5.60 x 13.56 | 33.0 |
| QR-0080 (291303) | 100-115/200 240/60/50/1 | CS | 8.00 | 6.40 | 4.80 | 3.40 | 2.00 | .40 | 26.0 | 6.75 x 6.50 x 16.41 | 54.0 |
| QR-0080 (291309) | 200-240/460/60 200-220/380-415/50 | POLY | 8.00 | 6.40 | 4.80 | 3.40 | 2.00 | 0.4 | 25.0 | 6.75 x 6.50 x 16.41 | 56.0 |
| QR-0100 (291310) | 200-240/460/60 200-220/380-415/50 | POLY | 10.00 | 8.10 | 6.20 | 4.40 | 2.50 | .8 | 25.0 | 6.75 x 6.50 x 16.41 | 56.0 |
| QR-0100 (291304) | 100-115/200 240/60/50/1 | CS | 10.00 | 8.10 | 6.20 | 4.40 | 2.50 | .8 | 26.0 | 6.75 x 6.50 x 16.41 | 54.0 |
| SR-0015-VP (291275) | 115/60/50/1 | PSC | 1.50 | 1.10 | 0.80 | 0.50 | 0.20 | - | 24.0 | 4.12 x 4.17 x 8.17 | 8.0 |
| SR-0015-VP (291293) | 220/240/50/60/1 | PSC | 1.20 | 0.90 | 0.60 | 0.40 | 0.20 | - | 24.0 | 4.12 x 4.17 x 8.17 | 8.0 |
| SR-0015-VP (291277) | 115/60/50/1 | SPh | 1.50 | 1.10 | 0.80 | 0.50 | 0.20 | - | 24.0 | 4.12 x 4.17 x 8.17 | 8.5 |

*CS = Capacitor Start, SPh = Split Phase, PSC = Permanent Split Capacitor, POLY = 3 Phase

Note: Minimum release quantities or regional availability may apply. Consult factory.

Note: 50/60 Hz voltage - flow values listed at 60 Hz.

QR-0080
QR-0100

Model Selection



Rotary Vane

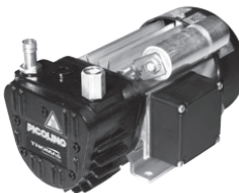
DTE 3



DTE 6



VTE 10



| Pressure | | | | | | | | | | | | |
|----------|----------------|-------|----------------------|-----|-----|-----|-----|-----|------|-------------------------|--------------|-----|
| MODEL | MOTOR CAPACITY | | FLOW l/min @ mbar | | | | | | | MAXIMUM PRESSURE bar | | |
| | VOLTAGE | TYPE* | 0 | 100 | 200 | 400 | 600 | 800 | 1000 | CONTINUOUS | INTERMITTENT | |
| TF 2 | 24 | PM | 42 | 39 | 37 | 33 | 29 | 25 | 21 | - | - | 1.0 |
| TF 4 | 12,24 | PM | 66 | 62 | 59 | 52 | 46 | 39 | 33 | - | - | 1.0 |
| TF 4HP | 24 | PM | 84 | 83 | 82 | 77 | 71 | 64 | 58 | - | - | 1.0 |
| TF 8 | 24 | PSC | 131 | 131 | 126 | 117 | 108 | 99 | 90 | - | - | 1.0 |
| VTE 3 | 230/50/1 | PSC | - | - | - | - | - | - | - | - | - | - |
| VTE 3 | 115/60/1 | PSC | - | - | - | - | - | - | - | - | - | - |
| VTE 3 | multi | POLY | - | - | - | - | - | - | - | - | - | - |
| VTE 3 | 24 | PM | - | - | - | - | - | - | - | - | - | - |
| DTE 3 | 230/50/1 | PSC | 58 | 57 | 55 | 52 | 47 | 43 | 38 | - | 1.0 | 1.0 |
| DTE 3 | 115/60/1 | PSC | 70 | 69 | 68 | 63 | 60 | 55 | - | - | 0.8 | 0.8 |
| DTE 3 | multi | POLY | 58 | 57 | 55 | 52 | 47 | 43 | 38 | - | 1.0 | 1.0 |
| DTE 3 | 24 | PM | 58 | 57 | 55 | 52 | 47 | 43 | 38 | - | 1.0 | 1.0 |
| VTE 6 | 230/50/1 | PSC | - | - | - | - | - | - | - | - | - | - |
| VTE 6 | 115/60/1 | PSC | - | - | - | - | - | - | - | - | - | - |
| VTE 6 | multi | POLY | - | - | - | - | - | - | - | - | - | - |
| VTE 6 | 24 | PM | - | - | - | - | - | - | - | - | - | - |
| DTE 6 | 230/50/1 | PSC | 100 | 98 | 97 | 90 | 85 | 75 | 67 | - | 1.0 | 1.0 |
| DTE 6 | 115/60/1 | PSC | 120 | 117 | 115 | 108 | 102 | 95 | 83 | - | 1.0 | 1.0 |
| DTE 6 | multi | POLY | 100 | 98 | 97 | 90 | 85 | 75 | 67 | - | 1.0 | 1.0 |
| DTE 6 | 24 | PM | 100 | 98 | 97 | 90 | 85 | 75 | 67 | - | 1.0 | 1.0 |
| VTE 8 | 230/50/1 | PSC | - | - | - | - | - | - | - | - | - | - |
| VTE 8 | 115/60/1 | PSC | - | - | - | - | - | - | - | - | - | - |
| VTE 8 | multi | POLY | - | - | - | - | - | - | - | - | - | - |
| VTE 8 | 24 | PM | - | - | - | - | - | - | - | - | - | - |
| DTE 8 | 230/50/1 | PSC | 133 | 132 | 128 | 118 | 113 | - | - | - | 0.6 | 0.6 |
| DTE 8 | 115/60/1 | PSC | 160 | 128 | 153 | 145 | 133 | 102 | 98 | - | 0.6 | 0.6 |
| DTE 8 | multi | POLY | 133 | 132 | 128 | 118 | 113 | 102 | 98 | - | 1.0 | 1.0 |
| DTE 8 | 24 | PM | 133 | 132 | 128 | 118 | 113 | 102 | 98 | - | 1.0 | 1.0 |
| VTE 10 | 230/50/1 | PSC | - | - | - | - | - | - | - | - | - | - |
| VTE 10 | 115/60/1 | PSC | - | - | - | - | - | - | - | - | - | - |
| VTE 10 | multi | POLY | - | - | - | - | - | - | - | - | - | - |
| VTE 10 | 24 | PM | - | - | - | - | - | - | - | - | - | - |
| DTE 10 | 230/50/1 | PSC | 167 | 164 | 158 | 146 | 134 | 122 | - | - | 0.8 | 0.8 |
| DTE 10 | 115/60/1 | PSC | 200 | 194 | 187 | 174 | 161 | 148 | - | - | 0.8 | 0.8 |
| DTE 10 | multi | POLY | 167 | 164 | 158 | 146 | 134 | 122 | 110 | - | 1.0 | 1.0 |
| DTE 10 | 24 | PM | 167 | 164 | 158 | 146 | 134 | 122 | 110 | - | 1.0 | 1.0 |

*PM = Permanent Magnet, PSC = Permanent Split Capacitor, POLY = 3 Phase

Note: Minimum release quantities or regional availability may apply. Consult factory.

Model Selection


Rotary Vane

| Vacuum | | | | | | | | | | | |
|--------|----------------|-------|----------------------|------|------|------|------|------|--------------------------------------|---------------------------------|--------------|
| MODEL | MOTOR CAPACITY | | FLOW l/min @ mbar | | | | | | MAX. VACUUM mbar CONT./INTERM. | DIMENSIONS (H x W x L) mm | WEIGHT kg |
| | VOLTAGE | TYPE* | 0 | -100 | -200 | -400 | -600 | -800 | | | |
| TF 2 | 24 | PM | 42 | 37 | 32 | 21 | 11 | - | - | 93 x 88 x 215 | 3.5 |
| TF 4 | 12,24 | PM | 66 | 53 | 40 | 33 | 17 | - | - | 93 x 88 x 215 | 3.5 |
| TF4HP | 24 | PM | 84 | 73 | 63 | 42 | 21 | - | - | 93 x 88 x 215 | 3.5 |
| TF 8 | 24 | PSC | 136 | 119 | 102 | 68 | 34 | - | - | 143 x 138 x 260 | 7.5 |
| VTE 3 | 230/50/1 | PSC | 58 | 51 | 44 | 31 | 17 | 3 | -850 / -850 | 150 x 152 x 205 | 6.5 |
| VTE 3 | 115/60/1 | PSC | 70 | 62 | 53 | 37 | 20 | 4 | -850 / -850 | 150 x 152 x 205 | 6.5 |
| VTE 3 | multi | POLY | 58 | 51 | 44 | 31 | 17 | 3 | -850 / -850 | 150 x 152 x 205 | 6.5 |
| VTE 3 | 24 | PM | 58 | 51 | 44 | 31 | 17 | 3 | -850 / -850 | 150 x 152 x 210 | 7.9 |
| DTE 3 | 230/50/1 | PSC | - | - | - | - | - | - | - | 150 x 152 x 205 | 6.5 |
| DTE 3 | 115/60/1 | PSC | - | - | - | - | - | - | - | 150 x 152 x 205 | 6.5 |
| DTE 3 | multi | POLY | - | - | - | - | - | - | - | 150 x 152 x 205 | 6.5 |
| DTE 3 | 24 | PM | - | - | - | - | - | - | - | 150 x 152 x 210 | 7.9 |
| VTE 6 | 230/50/1 | PSC | 100 | 89 | 77 | 52 | 30 | 7 | -850 / -850 | 156 x 152 x 220 | 7.5 |
| VTE 6 | 115/60/1 | PSC | 120 | 106 | 92 | 64 | 36 | 9 | -850 / -850 | 156 x 152 x 220 | 7.5 |
| VTE 6 | multi | POLY | 100 | 89 | 77 | 52 | 30 | 7 | -850 / -850 | 156 x 152 x 220 | 7.5 |
| VTE 6 | 24 | PM | 100 | 89 | 77 | 52 | 30 | 7 | -850 / -851 | 156 x 152 x 225 | 8.5 |
| DTE 6 | 230/50/1 | PSC | - | - | - | - | - | - | - | 156 x 152 x 220 | 7.5 |
| DTE 6 | 115/60/1 | PSC | - | - | - | - | - | - | - | 156 x 152 x 220 | 7.5 |
| DTE 6 | multi | POLY | - | - | - | - | - | - | - | 156 x 152 x 220 | 7.5 |
| DTE 6 | 24 | PM | - | - | - | - | - | - | - | 156 x 156 x 225 | 8.5 |
| VTE 8 | 230/50/1 | PSC | 133 | 117 | 99 | 68 | 77 | 10 | -850 / -850 | 156 x 156 x 249 | 8.0 |
| VTE 8 | 115/60/1 | PSC | 160 | 140 | 120 | 81 | 45 | 13 | -850 / -850 | 156 x 156 x 249 | 8.0 |
| VTE 8 | multi | POLY | 133 | 117 | 99 | 68 | 37 | 10 | -850 / -850 | 156 x 156 x 249 | 8.0 |
| VTE 8 | 24 | PM | 133 | 117 | 99 | 68 | 37 | 10 | -850 / -850 | 156 x 156 x 245 | 9.2 |
| DTE 8 | 230/50/1 | PSC | - | - | - | - | - | - | - | 156 x 156 x 249 | 8.0 |
| DTE 8 | 115/60/1 | PSC | - | - | - | - | - | - | - | 156 x 156 x 249 | 8.0 |
| DTE 8 | multi | POLY | - | - | - | - | - | - | - | 156 x 156 x 249 | 8.0 |
| DTE 8 | 24 | PM | - | - | - | - | - | - | - | 156 x 156 x 245 | 9.2 |
| VTE 10 | 230/50/1 | PSC | 167 | 150 | 130 | 90 | 50 | 10 | -850 / -850 | 156 x 156 x 265 | 10.3 |
| VTE 10 | 115/60/1 | PSC | 200 | 175 | 155 | 105 | 60 | 15 | -850 / -850 | 156 x 156 x 265 | 10.3 |
| VTE 10 | multi | POLY | 167 | 150 | 130 | 90 | 50 | 10 | -850 / -850 | 156 x 156 x 265 | 10.1 |
| VTE 10 | 24 | PM | 167 | 150 | 130 | 90 | 50 | 10 | -850 / -850 | 156 x 156 x 270 | 11.8 |
| DTE 10 | 230/50/1 | PSC | - | - | - | - | - | - | - | 156 x 156 x 265 | 10.3 |
| DTE 10 | 115/60/1 | PSC | - | - | - | - | - | - | - | 156 x 156 x 265 | 10.3 |
| DTE 10 | multi | POLY | - | - | - | - | - | - | - | 156 x 156 x 265 | 10.1 |
| DTE 10 | 24 | PM | - | - | - | - | - | - | - | 156 x 156 x 270 | 11.8 |

*PM = Permanent Magnet, PSC = Permanent Split Capacitor, POLY = 3 Phase

Note: Minimum release quantities or regional availability may apply. Consult factory.

TF 2



TF 4



VTE 3

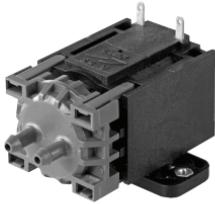


Model Selection

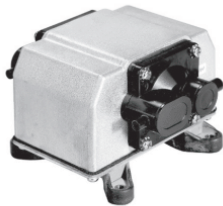


Linear Diaphragm

LMG 4



YP-20DU



| Pressure | | | | | | | | |
|----------|----------------|-------|----------------------|------|------|------|--------------------------|--------------|
| MODEL | MOTOR CAPACITY | | FLOW l/min @ mbar | | | | MAXIMUM PRESSURE mbar | |
| | VOLTAGE | TYPE* | 0 ¹⁾ | 100 | 200 | 400 | CONTINUOUS | INTERMITTENT |
| LMG 4 | 230/50/1 | LM | - | 1.1 | 0.95 | 0.5 | 450.0 | 450.0 |
| LMG 4 | 115/60/1 | LM | - | 1.2 | 1.0 | 0.35 | 450.0 | 450.0 |
| LMG 4 | 12,24 | LM | - | 1.1 | 0.95 | 0.5 | 450.0 | 450.0 |
| LM 15 | 230/50/1 | LM | 16.0 | 12.5 | 8.4 | - | 300.0 | 400.0 |
| LM 15 | 115/60/1 | LM | 16.0 | 12.5 | 8.7 | 0.8 | 300.0 | 420.0 |
| LM 15 | 12,24 | LM | 15.0 | 12.0 | 6.6 | - | 200.0 | 320.0 |
| LM 22 | 230/50/1 | LM | 22.0 | 16.0 | 8.0 | - | 250.0 | 300.0 |
| LM 22 | 12,24 | LM | 20.0 | 15.0 | 5.6 | - | 200.0 | 260.0 |
| YP-15DU | 230/50/1 | LM | - | 15.0 | 5.0 | - | 200.0 | 200.0 |
| YP-20DU | 230/50/1 | LM | - | 20.0 | 9.0 | - | 200.0 | 200.0 |
| YP-40DU | 230/50/1 | LM | - | 49.0 | 20.0 | - | 200.0 | 200.0 |
| YP-50DU | 230/50/1 | LM | - | 56.0 | 29.0 | - | 200.0 | 200.0 |

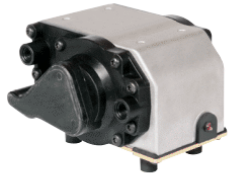
*LM = Linear Magnetic. If 230V 60Hz is required for YP Models, consult factory.

0¹⁾ - Free flow operation not recommended

Note: Minimum release quantities or regional availability may apply. Consult factory.



Linear Diaphragm

6015
6025

| Pressure | | | | | | | | | | | | |
|-----------------|----------------|-------|-------------------|------|------|------|------|---|---|---|-------------------------|--------------|
| MODEL | MOTOR CAPACITY | | FLOW cfm @ psi | | | | | | | | MAXIMUM PRESSURE psi | |
| | VOLTAGE | TYPE* | 0 | 1 | 2 | 3 | 4 | 5 | 6 | 7 | CONTINUOUS | INTERMITTENT |
| 6015SE (150098) | 115/60/1 | LM | 1.10 | 0.62 | 0.09 | - | - | - | - | - | 2.0 | 2.0 |
| 6025SE (150057) | 115/60/1 | LM | 2.05 | 1.75 | 1.35 | 0.90 | 0.45 | - | - | - | 4.0 | 4.0 |
| 6025SE (150058) | 230/50/60/1 | LM | 2.13 | 1.86 | 1.43 | 1.04 | 0.60 | - | - | - | 4.0 | 4.0 |
| 6025SE (150108) | 12 | LM | 1.50 | 1.08 | 0.73 | 0.41 | 0.16 | - | - | - | 4.0 | 4.0 |
| 6025SE (150109) | 24 | LM | 1.50 | 1.08 | 0.73 | 0.41 | 0.16 | - | - | - | 4.0 | 4.0 |

*LM = Linear Magnetic.

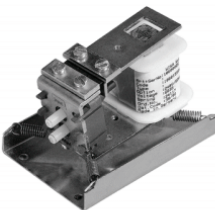
Note: Minimum release quantities or regional availability may apply. Consult factory.

Note: 50/60 Hz voltage - flow values listed at 60 Hz.



Linear Diaphragm (Vibrating Armature Type)

106



| Pressure | | | | | | | | |
|----------|----------------|-------|----------------------|-----|-----|-----|--------------------------|--------------|
| MODEL | MOTOR CAPACITY | | FLOW l/min @ mbar | | | | MAXIMUM PRESSURE mbar | |
| | VOLTAGE | TYPE* | 0 | 100 | 200 | 400 | CONTINUOUS | INTERMITTENT |
| 106 | 230/50 | VA | 0.9 | 0.6 | 0.2 | - | 200.0 | 270.0 |
| 112.0 | 230/50 | VA | 2.8 | 2.0 | 1.2 | - | 280.0 | 280.0 |
| 112.1 | 230/50 | VA | 5.0 | 2.6 | 2.0 | - | 340.0 | 340.0 |
| 202.0 | 230/50 | VA | 4.6 | 3.3 | 1.7 | - | 340.0 | 340.0 |
| 202.1 | 230/50 | VA | 4.8 | 3.8 | 2.1 | 0.3 | 450.0 | 450.0 |
| 302.0 | 230/50 | VA | 5.5 | 4.3 | 3.0 | 1.0 | 500.0 | 500.0 |
| 302.1 | 230/50 | VA | 8.5 | 6.5 | 5.2 | 3.0 | 700.0 | 700.0 |
| 312 | 230/50 | VA | 6.2 | 3.8 | 1.7 | - | 270.0 | 270.0 |
| 362 | 230/50 | VA | 8.5 | 4.6 | - | - | 200.0 | 200.0 |

*VA = Vibrating armature

Note: Minimum release quantities or regional availability may apply. Consult factory.

Model Selection

Linear Diaphragm

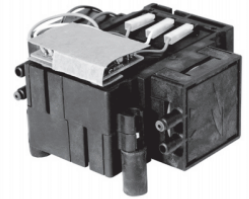
| Vacuum | | | | | | | | |
|---------|----------------|-------|----------------------|------|------|--------------------------------------|---------------------------------|--------------|
| MODEL | MOTOR CAPACITY | | FLOW l/min @ mbar | | | MAX. VACUUM mbar CONT./INTERM. | DIMENSIONS (H x W x L) mm | WEIGHT kg |
| | VOLTAGE | TYPE* | 0 ¹⁾ | -100 | -200 | | | |
| LMG 4 | 230/50/1 | LM | - | 0.9 | 0.4 | -200 / -200 | 46 x 53 x 72 | 0.2 |
| LMG 4 | 115/60/1 | LM | - | 0.9 | 0.4 | -200 / -200 | 46 x 53 x 72 | 0.2 |
| LMG 4 | 230/50/1 | LM | - | 0.9 | 0.4 | -200 / -200 | 46 x 53 x 72 | 0.2 |
| LM 15 | 230/50/1 | LM | 16.0 | 12.5 | 7.5 | -300 / -350 | 65 x 111 x 107 | 1.0 |
| LM 15 | 115/60/1 | LM | 16.0 | 12.5 | 8.4 | -300 / -400 | 65 x 111 x 107 | 1.0 |
| LM 15 | 12,24 | LM | 15.0 | 16.0 | 5.3 | -200 / -280 | 76 x 111 x 107 | 1.0 |
| LM 22 | 230/50/1 | LM | 22.0 | 16.0 | 6.0 | -250 / -260 | 65 x 111 x 107 | 1.0 |
| LM 22 | 12,24 | LM | 20.0 | 15.0 | 5.6 | -200 / -260 | 76 x 111 x 107 | 1.0 |
| YP-15DU | 230/50/1 | LM | - | - | - | - | 77 x 116 x 110 | 1.2 |
| YP-20DU | 230/50/1 | LM | - | - | - | - | 77 x 116 x 110 | 1.2 |
| YP-40DU | 230/50/1 | LM | - | - | - | - | 104 x 160 x 136 | 2.5 |
| YP-50DU | 230/50/1 | LM | - | - | - | - | 104 x 160 x 136 | 2.8 |

*LM = Linear Magnetic.

0¹⁾ - Free flow operation not recommended

Note: Minimum release quantities or regional availability may apply. Consult factory.

LM 15



YP-40DU



Linear Diaphragm

| Vacuum | | | | | | | | | | |
|-----------------|----------------|-------|----------------------|------|------|------|------|-----------------------|---------------------------------|--------------|
| MODEL | MOTOR CAPACITY | | FLOW cfm @ in. Hg | | | | | MAX. VACUUM in. Hg | DIMENSIONS (H x W x L) in | WEIGHT lb |
| | VOLTAGE | TYPE* | 0 | 2 | 4 | 6 | 8 | | | |
| 6015SE (150098) | 115/60/1 | LM | 1.10 | 0.63 | 0.10 | - | - | 4.0 | 3.33 x 4.60 x 5.00 | 2.7 |
| 6025SE (150057) | 115/60/1 | LM | 2.05 | 1.57 | 1.13 | 0.77 | 0.39 | 8.0 | 3.33 x 4.60 x 5.00 | 3.3 |
| 6025SE (150058) | 230/50/60/1 | LM | 2.13 | 1.55 | 1.12 | 0.76 | 0.45 | 8.0 | 3.33 x 4.60 x 5.00 | 3.3 |
| 6025SE (150108) | 12 | LM | 1.50 | 1.09 | 0.74 | 0.43 | 0.17 | 8.0 | 3.33 x 4.60 x 5.00 | 3.3 |
| 6025SE (150109) | 24 | LM | 1.50 | 1.09 | 0.74 | 0.43 | 0.17 | 8.0 | 3.33 x 4.60 x 5.00 | 3.3 |

*LM = Linear Magnetic, 230/50/60/1 Model Flow reported at 60Hz

Note: Minimum release quantities or regional availability may apply. Consult factory.

Note: 50/60 Hz voltage - flow values listed at 60 Hz.

312



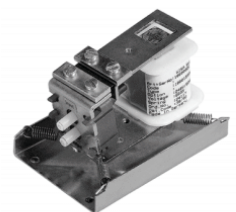
Linear Diaphragm (Vibrating Armature Type)

| Vacuum | | | | | | | | | |
|--------|----------------|-------|----------------------|------|------|------|---------------------|---------------------------------|--------------|
| MODEL | MOTOR CAPACITY | | FLOW l/min @ mbar | | | | MAX. VACUUM mbar | DIMENSIONS (H x W x L) mm | WEIGHT kg |
| | VOLTAGE | TYPE* | 0 | -100 | -200 | -400 | | | |
| 107 | 230/50 | VA | 1.2 | 0.6 | - | - | -190 | 60 x 60 x 90 | 0.3 |
| 113.0 | 230/50 | VA | 4.2 | 2.0 | 1.2 | - | -280 | 81 x 78 x 113 | 0.8 |
| 113.1 | 230/50 | VA | 3.2 | 2.5 | 1.6 | 0.4 | -450 | 81 x 78 x 113 | 0.8 |
| 203.0 | 230/50 | VA | 4.6 | 2.5 | 1.2 | - | -300 | 91 x 70 x 140 | 1.6 |
| 203.1 | 230/50 | VA | 5.5 | 4.0 | 2.3 | 0.6 | -450 | 91 x 70 x 140 | 1.6 |
| 303.0 | 230/50 | VA | 5.5 | 3.5 | 2.2 | 0.5 | -420 | 97 x 78 x 165 | 2.2 |
| 303.1 | 230/50 | VA | 6.8 | 5.0 | 3.6 | 2.0 | -550 | 97 x 78 x 165 | 2.2 |
| 313 | 230/50 | VA | 6.2 | 3.3 | 0.7 | - | -250 | 84 x 65 x 162 | 0.9 |
| 363 | 230/50 | VA | 8.5 | 4.4 | - | - | -230 | 84 x 65 x 162 | 0.9 |

*VA = Vibrating armature

Note: Minimum release quantities or regional availability may apply. Consult factory.

107



Model Selection



Linear Diaphragm

YP-15A



AP-120



| Pressure | | | | | | | | | |
|----------|----------------|-------|----------------------|-------|-------|-------|----------------------------------|---------|--|
| MODEL | MOTOR CAPACITY | | FLOW l/min @ mbar | | | | OPERATING PRESSURE RANGE mbar | | |
| | VOLTAGE | TYPE* | 0 | 100 | 200 | 300 | MINIMUM | MAXIMUM | |
| YP-15A | 230/50/1 | LM | 25.0 | 15.0 | 5.0 | - | 20.0 | 200.0 | |
| YP-20A | 230/50/1 | LM | 31.0 | 20.0 | 9.0 | - | 20.0 | 200.0 | |
| YP-20V | 230/50/1 | LM | 31.0 | 20.0 | 7.0 | - | 50.0 | 200.0 | |
| YP-40VC | 230/50/1 | LM | 60.0 | 48.0 | 30.0 | - | 50.0 | 200.0 | |
| YP-50VC | 230/50/1 | LM | 83.0 | 61.0 | 38.0 | - | 50.0 | 200.0 | |
| YP-60VC | 230/50/1 | LM | 89.0 | 70.0 | 52.0 | - | 50.0 | 200.0 | |
| YP-70VC | 230/50/1 | LM | 115.0 | 93.0 | 73.0 | - | 50.0 | 200.0 | |
| AP-40 | 230/50/1 | LM | 72.0 | 52.0 | 21.0 | - | 50.0 | 200.0 | |
| AP-60N | 230/50/1 | LM | 105.0 | 82.0 | 47.0 | 4.0 | 100.0 | 300.0 | |
| AP-60/80 | 230/50/1 | LM | 118.0 | 91.0 | 60.0 | 18.0 | 100.0 | 300.0 | |
| AP-80H | 230/50/1 | LM | 151.0 | 124.0 | 82.0 | 21.0 | 100.0 | 300.0 | |
| AP-100 | 230/50/1 | LM | 172.0 | 143.0 | 108.0 | 48.0 | 140.0 | 300.0 | |
| AP-120 | 230/50/1 | LM | 190.0 | 160.0 | 125.0 | 70.0 | 160.0 | 300.0 | |
| LP-150HN | 230/50/1 | LM | 255.0 | 200.0 | 150.0 | 90.0 | 100.0 | 300.0 | |
| LP-200HN | 230/50/1 | LM | 300.0 | 250.0 | 200.0 | 148.0 | 100.0 | 300.0 | |
| LW-240 | 230/50/1 | LM | 385.0 | 315.0 | 240.0 | - | 100.0 | 250.0 | |
| LW-300 | 230/50/1 | LM | 570.0 | 480.0 | 350.0 | - | 100.0 | 250.0 | |
| LW-400 | 230/50/1 | LM | 625.0 | 530.0 | 425.0 | - | 100.0 | 250.0 | |

*LM = Linear Magnetic. If 230V 60Hz required, consult factory

Note: Minimum release quantities or regional availability may apply. Consult factory.

LW-400



Linear Diaphragm

| Pressure | | | | | | | | | | | | |
|-----------------|----------------|-------|-------------------|------|------|------|---|---|---|---|---------------------------------|---------|
| MODEL | MOTOR CAPACITY | | FLOW cfm @ psi | | | | | | | | OPERATING PRESSURE RANGE psi | |
| | VOLTAGE | TYPE* | 0 | 1 | 2 | 3 | 4 | 5 | 6 | 7 | MINIMUM | MAXIMUM |
| AP-40 (150131) | 115/60/1 | LM | 2.10 | 1.90 | 1.40 | 0.88 | - | - | - | - | 1.45 | 2.90 |
| AP-60 (150132) | 115/60/1 | LM | 2.80 | 2.50 | 2.28 | 1.71 | - | - | - | - | 1.45 | 2.90 |
| AP-80 (150133) | 115/60/1 | LM | 4.20 | 3.50 | 3.10 | 2.53 | - | - | - | - | 1.74 | 2.90 |
| AP-100 (150142) | 115/60/1 | LM | 5.00 | 4.70 | 4.20 | 3.80 | - | - | - | - | 1.45 | 3.62 |
| AP-120 (150139) | 115/60/1 | LM | 5.40 | 5.00 | 4.80 | 4.30 | - | - | - | - | 1.45 | 3.62 |

*LM = Linear Magnetic.

Note: Minimum release quantities or regional availability may apply. Consult factory.

Model Selection



Linear Diaphragm

| Vacuum | | | | | | | | |
|----------|----------------|-------|----------------------|------|------|--------------------------------------|---------------------------------|--------------|
| MODEL | MOTOR CAPACITY | | FLOW l/min @ mbar | | | OP VACUUM RANGE mbar MIN./MAX. | DIMENSIONS (H x W x L) mm | WEIGHT kg |
| | VOLTAGE | TYPE* | 0 | -100 | -200 | | | |
| YP-15A | 230/50/1 | LM | - | - | - | - | 111 X 128 X 148 | 2.4 |
| YP-20A | 230/50/1 | LM | - | - | - | - | 111 X 128 X 148 | 2.4 |
| YP-20V | 230/50/1 | LM | - | 19.0 | 7.0 | -50 / -200 | 111 X 128 X 148 | 2.4 |
| YP-40VC | 230/50/1 | LM | - | 43.0 | 25.0 | -50 / -200 | 163 X 175 X 207 | 5.1 |
| YP-50VC | 230/50/1 | LM | - | 58.0 | 30.0 | -50 / -200 | 163 X 175 X 207 | 5.5 |
| YP-60VC | 230/50/1 | LM | - | 67.0 | 42.0 | -50 / -200 | 163 X 175 X 207 | 5.9 |
| YP-70VC | 230/50/1 | LM | - | 87.0 | 61.0 | -50 / -200 | 163 X 175 X 207 | 6.2 |
| AP-40 | 230/50/1 | LM | - | - | - | - | 199 X 172 X 215 | 4.6 |
| AP-60N | 230/50/1 | LM | - | - | - | - | 199 X 172 X 215 | 5.8 |
| AP-60/80 | 230/50/1 | LM | - | - | - | - | 199 X 172 X 215 | 5.8 |
| AP-80H | 230/50/1 | LM | - | - | - | - | 199 X 172 X 215 | 6.1 |
| AP-100 | 230/50/1 | LM | - | - | - | - | 199 X 172 X 215 | 6.1 |
| AP-120 | 230/50/1 | LM | - | - | - | - | 199 X 172 X 215 | 6.1 |
| LP-150HN | 230/50/1 | LM | - | - | - | - | 218 X 179 X 250 | 8.6 |
| LP-200HN | 230/50/1 | LM | - | - | - | - | 218 X 179 X 250 | 8.6 |
| LW-240 | 230/50/1 | LM | - | - | - | - | 216 X 220 X 365 | 14.4 |
| LW-300 | 230/50/1 | LM | - | - | - | - | 216 X 220 X 365 | 16.0 |
| LW-400 | 230/50/1 | LM | - | - | - | - | 216 X 220 X 365 | 16.0 |

*LM = Linear Magnetic. If 230V 60Hz required, consult factory

Note: Minimum release quantities or regional availability may apply. Consult factory.

YP-20V



YP-70VC




Linear Diaphragm

| Vacuum | | | | | | | | | | |
|-----------------|----------------|-------|----------------------|---|---|---|---|---------------------------|---------------------------------|--------------|
| MODEL | MOTOR CAPACITY | | FLOW cfm @ in. Hg | | | | | OP VACUUM RANGE in. Hg | DIMENSIONS (H x W x L) in | WEIGHT lb |
| | VOLTAGE | TYPE* | 0 | 1 | 2 | 3 | 4 | | | |
| AP-40 (150131) | 115/60/1 | LM | - | - | - | - | - | - | 7.84 x 7.01 x 8.58 | 10.3 |
| AP-60 (150132) | 115/60/1 | LM | - | - | - | - | - | - | 7.84 x 7.01 x 8.58 | 10.9 |
| AP-80 (150133) | 115/60/1 | LM | - | - | - | - | - | - | 7.84 x 7.01 x 8.58 | 10.9 |
| AP-100 (150142) | 115/60/1 | LM | - | - | - | - | - | - | 7.84 x 7.01 x 8.58 | 12.6 |
| AP-120 (150139) | 115/60/1 | LM | - | - | - | - | - | - | 7.84 x 7.01 x 8.58 | 12.6 |

*LM = Linear Magnetic.

Note: Minimum release quantities or regional availability may apply. Consult factory.

LP-200HN



Model Selection

1210 DC



5002F



LMF



SR10/30 DC



SR10/50 DC



SR18



SR25 DC



Liquid Diaphragm

TYPICAL CHARACTERISTICS

safe dry running, self priming, different diaphragm materials possible, connection via nozzle or thread

| MODEL | VOLTAGE | MOTOR TYPE | FREE FLOW ml/min | PRESSURE HEIGHT | SUCTION HEIGHT | OPERATION | DIMENSIONS (mm) H x W x L |
|--------------|---------|------------|------------------|-----------------------|------------------------|------------|---------------------------|
| 1210 | DC | PM | 180 | 60 m H ₂ O | 6.0 m H ₂ O | Continuous | 37 x 23 x 52 |
| 5002F | DC | PM | 400 | 15 m H ₂ O | 6.0 m H ₂ O | Continuous | 80 x 30 x 52 |
| 5002FZ | DC | PM | 1100 | 25 m H ₂ O | 5.0 m H ₂ O | Continuous | 82 x 30 x 86 |
| F120 stepper | DC/AC* | ST | 1-260 | 60 m H ₂ O | 4.0 m H ₂ O | Continuous | 102 x 59 x 87 |
| F120 | DC | PM | 900 | 20 m H ₂ O | 4.0 m H ₂ O | Continuous | 126 x 61 x 101 |

DC/AC* = With separate electronics, PM = Permanent Magnet, ST = Stepper motor

Note: Minimum release quantities or regional availability may apply. Consult factory.



Liquid Linear

TYPICAL CHARACTERISTICS

self priming, individual impulse drive, long life; pulse control, dosing pumps available

| MODEL | VOLTAGE | MOTOR TYPE | FREE FLOW ml/min | PRESSURE HEIGHT | SUCTION HEIGHT | OPERATION | DIMENSIONS (mm) H x W x L |
|------------|-----------|------------|------------------|------------------------|------------------------|------------|---------------------------|
| LMF 3 | AC or DC* | LM | 250 | 7.5 m H ₂ O | 2.0 m H ₂ O | Continuous | 46 x 53 x 72 |
| LMF 4 | AC or DC* | LM | 300 | 9.0 m H ₂ O | 3.0 m H ₂ O | Continuous | 46 x 53 x 72 |
| LMF Dosing | DC | LM | 63 | 5.6 m H ₂ O | 1.0 m H ₂ O | Continuous | 46 x 53 x 88 |

DC* = With separate electronics, LM = Linear drive

Note: Minimum release quantities or regional availability may apply. Consult factory.



Liquid Peristaltic, Direct Drive

TYPICAL CHARACTERISTICS

safe dry running, adjustable via speed, reversible (DC), interchangeable cassettes, wide range of tubing options

| MODEL | VOLTAGE | MOTOR TYPE | FREE FLOW ml/min | PRESSURE HEIGHT | SUCTION HEIGHT | OPERATION | DIMENSIONS (mm) H x W x L |
|----------|----------|------------|------------------|----------------------|----------------------|------------|---------------------------|
| SR10/30 | DC | PM | 16-55 | 8 m H ₂ O | 8 m H ₂ O | Continuous | 68 x 54 x 40 |
| SR10/30 | DC | PM | 20-80 | 8 m H ₂ O | 8 m H ₂ O | Continuous | 81 x 56 x 40 |
| SR10/30 | DC/AC* | ST | 0.48-20 | 8 m H ₂ O | 8 m H ₂ O | Continuous | 38 x 53 x 40 |
| SR10/50 | DC | PM | 52-220 | 8 m H ₂ O | 8 m H ₂ O | Continuous | 85 x 60 x 57 |
| SR10/100 | AC or DC | PSC/PM | 1300-3000 | 8 m H ₂ O | 8 m H ₂ O | Continuous | 143 x 109 x 119 |

DC/AC* = With separate electronics, PM = Permanent Magnet, ST = Stepper motor, PSC = Permanent split capacitor

Note: Minimum release quantities or regional availability may apply. Consult factory.



Liquid Peristaltic, Gear Drive

TYPICAL CHARACTERISTICS

insensitive against contamination, adjustable via speed, pumping of highly viscous liquids, sterilisable tubes, simple changing of tubing, wide range of tubing available

| MODEL | VOLTAGE | MOTOR TYPE | FREE FLOW ml/min | PRESSURE HEIGHT | SUCTION HEIGHT | OPERATION | DIMENSIONS (mm) H x W x L |
|-----------|----------|------------|------------------|-----------------------|----------------------|------------|---------------------------|
| SR18 | AC | SY | 3-50 | 10 m H ₂ O | 8 m H ₂ O | Continuous | 61.5 x 68 x 90 |
| SR25 | AC | SY | 0.2-14 | 10 m H ₂ O | 8 m H ₂ O | Continuous | 92 x 86 x 80 |
| SR25 | AC or DC | SP/PM | 2.0-746 | 10 m H ₂ O | 8 m H ₂ O | Continuous | 156 x 80 x 108 |
| SR25-300S | DC/AC* | ST | 0.1-430 | 10 m H ₂ O | 8 m H ₂ O | Continuous | 96 x 80 x 101 |

DC/AC* = With separate electronics, PM = Permanent Magnet, ST = Stepper motor, SP = Shaded Pole, SY = Syncro

Note: Minimum release quantities or regional availability may apply. Consult factory.

Notes

Conversion of Units

Flow

$$1 \text{ cfm} = 28.32 \text{ l/min}$$

$$1 \text{ l/min} = 0.0353 \text{ cfm}$$

Vacuum

$$1 \text{ in. Hg} = 33.8 \text{ mbar}$$

$$1 \text{ mbar} = 0.0296 \text{ in. Hg}$$

Weight

$$1 \text{ lb} = 0.4536 \text{ kg}$$

$$1 \text{ kg} = 2.21 \text{ lb}$$

Pressure

$$1 \text{ psi} = 0.069 \text{ bar}$$

$$1 \text{ bar} = 14.5 \text{ psi}$$

Dimensions

$$1 \text{ in} = 25.4 \text{ mm}$$

$$1 \text{ mm} = 0.0394 \text{ in}$$

Temperature

$$^{\circ}\text{C} = 0.55 \times (^{\circ}\text{F} - 32.0)$$

$$^{\circ}\text{F} = (1.8 \times ^{\circ}\text{C}) + 32.0$$

SALES OFFICES

Australia
 Brazil
 China
 Czech Republic
 Denmark
 France
 Germany
 Hong Kong
 India
 Italy
 Japan
 Korea
 Netherlands
 Slovakia
 Sweden
 Switzerland
 United Kingdom
 United States

MFG. LOCATIONS

Memmingen, Germany
 Monroe, LA, USA
 Wuxi, China

Representatives in other
 countries see
www.gd-thomas.com



by Gardner Denver

PUMP AND COMPRESSOR SOLUTIONS FOR OEMS WORLDWIDE
gd-thomas.com

**Gardner Denver Thomas GmbH**

Livry-Gargan-Str. 10
 82256 Fürstentfeldbruck
 Germany
 T +49 8141 2280 0
 F +49 8141 8892136
thomas.de@gardnerdenver.com

Gardner Denver Hong Kong, Limited

Unit 1317-1318 Delta House, 3 On Yiu Street
 Siu Lek Yuen, Shatin, New Territories
 Hong Kong
 T +852 2690 3502
 F +852 2792 4598
thomas.hk@gardnerdenver.com

Gardner Denver Thomas, Inc.

1419 Illinois Avenue
 Sheboygan, WI 53081
 USA
 T +1 920 457 4891
 F +1 920 451 4276
td.usa@gardnerdenver.com

The information presented in this material is based on technical data and test results of nominal units. It is believed to be accurate and reliable and is offered as an aid to help in the selection of Thomas products. It is the responsibility of the user to determine the suitability of the product for the intended use and the user assumes all risk and liability in connection there with. Thomas does not warrant, guarantee or assume any obligation or liability in connection with this information.

Models presented in this catalog are representative of the product family. Photos of products pictured in this catalog do not necessarily represent a specific model number. To obtain further information for custom options, contact your local Thomas office.

Printed in USA
 Form No. 850-4006 08/2017
 © Gardner Denver Thomas. All rights reserved.